

## **Historic, Archive Document**

Do not assume content reflects current scientific knowledge, policies, or practices.



62,61

Recd. 1/31

LIBRARY  
RECEIVED  
★ APR 5 1921  
U. S. Department of Agriculture

*Bassi Frères Inc*  
*de Paris*

201 1108 22

**Seeds  
Bulbs  
Plants**

**New Rochelle, New York**

# These Are the New Prices for Vegetable Seeds Only

**S**INCE this catalogue was printed, market conditions have made necessary many revisions. So many, in fact, that they have caused us to definitely cancel all prices quoted in the vegetable and grass seed sections, and to substitute the ones in the list.

In many cases the revised prices will be found lower than those printed in the body of the catalogue, so by all means be careful to use this revised list.

Make up your order upon the enclosed blank from the descriptions given in the body of the catalogue. Prices from this list may then be easily jotted down opposite the varieties.

Flower seed prices are unaffected. Please note that all revised prices are quoted by weight and not by measure.

	Pkt.	Oz.	¼lb.	½lb.	Lb.	2 lbs.	5 lbs.
<b>ASPARAGUS, Colossal</b> . . . . .	\$0 10	\$0 15	\$0 35	\$0 55	\$1 00		
Palmetto . . . . .	10	15	35	65	1 25		
Giant Argenteuil . . . . .	10	15	35	65	1 25		
<b>BEANS, Bountiful</b> . . . . .	10			20	30	\$0 55	\$1 35
Dwarf Horticultural . . . . .				20	35	65	1 60
Full Measure . . . . .	10			25	45	85	2 00
Stringless Green-Pod . . . . .				25	40	75	1 85
Giant Stringless Green-Pod . . . . .				25	40	75	1 85
Masterpiece (Sutton's) . . . . .				55	1 00	1 90	4 75
Longfellow . . . . .				20	35	65	1 60
Extra-Early Valentine . . . . .	10			25	40	75	1 75
Black Valentine . . . . .	10			20	30	55	1 35
Long Yellow Six-Weeks . . . . .	10			25	35	65	1 50
Refugee Stringless . . . . .	15			25	45	85	2 10
Refugee Late, or 1,000-to-1 . . . . .	10			25	40	75	1 75
Mohawk . . . . .	10			25	35	65	1 50
Green-Seeded Flageolet . . . . .	15			40	75	1 45	3 50
English Dwarf, Broad Windsor . . . . .				30	50	95	2 35
<b>Dwarf Wax Beans</b>							
Black Wax, Improved Prolific . . . . .				20	35	65	1 60
Black Wax, Currie's Rustproof . . . . .	15				40	75	1 75
Golden Wax, Improved . . . . .				20	35	65	1 60
Refugee Wax, Stringless . . . . .	15			25	40	75	1 75
Valentine Wax . . . . .	15			25	40	75	1 75
Wardwell's Kidney Wax . . . . .				25	40	75	1 85
<b>Dwarf Lima and Dwarf White Beans</b>							
Thorburn's Dwarf Lima . . . . .				35	60	1 10	
Burpee's Improved Bush Lima . . . . .	15			35	60	1 10	2 50
Henderson's Bush Lima, or Dwarf Sieva . . . . .				25	40	75	1 85
New Wonder Bush Lima . . . . .	15			30	55	1 00	2 30
White Kidney . . . . .	15			25	45	85	2 00
Red Kidney . . . . .				20	30	55	1 35
White Navy . . . . .	15			25	40	75	1 75
<b>Pole Beans, Challenger Lima</b> . . . . .	15			25	40	75	1 85
Early Jersey . . . . .	15			30	50	90	2 10
King of the Garden . . . . .	15			30	50	90	2 10
Detroit Mammoth Lima . . . . .	15			35	60	1 00	2 20
Leviathan . . . . .	15			25	40	75	1 85
Small Sieva, or Carolina . . . . .	15			25	45	85	2 00
Horticultural Pole . . . . .	15			25	45	85	2 00
Kentucky Wonder . . . . .				25	45	85	2 10
Scarlet Runner . . . . .				25	40	75	1 85
Yard-Long French . . . . .				55	1 00	1 85	4 50

# SEEDSMEN, FLORISTS, LANDSCAPE DESIGNERS

	Pkt.	Oz.	¼lb.	½lb.	Lb.			
<b>BEETS, Bassano</b>	\$0 05	\$0 15	\$0 50	\$0 90	\$1 50			
Crimson Globe	10	20	65	1 05	2 00			
Crosby's Egyptian	10	30	90	1 55	3 00			
Detroit Dark Red	10	20	65	1 05	2 00			
Dewing's Early	05	15	50	90	1 50			
Early Blood Turnip	05	15	45	80	1 35			
Eclipse	10	20	65	1 05	2 00			
Edmand's Blood Turnip	10	20	65	1 05	2 00			
Long Smooth Blood	10	30	90	1 55	3 00			
Swiss Chard, Lucullus	10	20	75	1 20	2 25			
<b>Mangel-Wurzel and Sugar Beets</b>								
Giant Half Sugar		15	40	70	1 25			
Golden Tankard		15	40	70	1 25			
Klein Wanzenleben		15	55	95	1 65			
<b>BROCCOLI, Early White</b>	10	50	1 50					
St. James	10	40	1 25					
<b>BRUSSELS SPROUTS, Dalkeith</b>	10	40	1 25					
Dwarf Improved	25							
Sharpe's Standard	10	50	1 50					
	Pkt.	¼oz.	½oz.	Oz.	¼lb.	Lb.		
<b>CABBAGE, Allhead</b>	\$0 10			\$0 40	\$1 25	\$3 75		
Copenhagen Market	20	\$0 35	\$0 60	1 10	4 00			
Early Jersey Wakefield	15	30	55	95	3 25			
Charleston Wakefield	15	30	55	95	3 25			
Early Flat Dutch, Stein's	10		35	55	2 00			
Early Summer	10		35	55	2 00			
Succession Improved	15	30	55	90	3 00			
Large Late Drumhead Champion	10	25	50	85	2 75			
Large Late Flat Dutch	10		35	55	2 00			
Red Rock Mammoth	15	30	55	90	3 00			
Savoy, Early Ulm	15	30	55	95	3 25			
Savoy Late Drumhead	10	30	40	85				
Chinese (Pe-Tsai)	10			50	1 50			
	Pkt.	¼oz.	½oz.	Oz.	¼lb.	Lb.		
<b>CAULIFLOWER, Early Dwarf Erfurt</b>	\$0 20	\$0 65	\$1 20	\$2 25	\$4 00			
Danish Giant, or Dry Weather	20	55	95	1 60	3 00			
Extra-Early Paris	25	1 25	1 75	3 25				
Autumn Giant	10		40	60	1 00			
	Pkt.	Oz.	¼lb.	½lb.	Lb.			
<b>CARDOON, Large, Solid</b>	\$0 10	\$0 40	\$1 25	\$2 40	\$4 00			
<b>CARROT, Parisian Forcing</b>	05	20	65	1 20	2 00			
Oxheart	10	25	80	1 50	2 50			
Scarlet Horn	10	25	80	1 50	2 50			
Half-Long Stump-rooted	05	20	65	1 20	2 00			
Chantenay Half-long	10	20	65	1 20	2 00			
Danvers Half-long	10	20	65	1 20	2 00			
Long Orange	10	25	80	1 50	2 50			
<b>CELERY</b>	Pkt.	¼oz.	Oz.	¼lb.	½lb.	Lb.	2 lbs.	5 lbs.
Improved White Plume	\$0 10	\$0 35	\$0 55	\$2 00		\$7 50		
Golden Self-blanching	20	55	1 00	3 50		12 00		
Giant Pascal	10	35	55	2 00		7 50		
Winter Queen	10		40	1 25		4 00		
Celeriac, Giant Prague	10		35	1 15		3 50		
Celeriac, Extra-Early Paris	10		45	1 50		4 50		
<b>CHERVIL, Curled</b>	10		25	1 00		3 50		
Plain	10		40					
Tuberous-rooted	10		50	1 50				
<b>CHICORY, Witloof</b>	10		35	1 25		4 00		
<b>CORN, SWEET, White Cory</b>								
Metropolitan	10		25	40	\$0 75	\$1 85		
Golden Bantam	10		25	40	75	1 85		
Minnesota	15		25	40	75	1 75		
Kendel's Giant	15		25	45	85	2 00		
Crosby's			20	30	55	1 35		
Howling Mob			30	50	95	2 35		
Stowell's Evergreen	10		20	35	65	1 60		
Golden Evergreen	15		30	50	95	2 25		
White Evergreen	15		25	45	85	2 00		
Black Mexican			25	40	75	1 85		
Country Gentleman	10		25	40	75	1 85		

**BASSI FRÈRES, INC., DE PARIS, NEW ROCHELLE, N. Y.**

	Pkt.	Oz.	¼lb.	Lb.
COLLARD, Georgia . . . . .	\$0 10	\$0 20	\$0 65	\$2 00
CORN SALAD, or FETTICUS . . . . .	10	20	65	2 00
	Pkt.	Oz.	¼lb.	½lb.
CUCUMBER, Cumberland . . . . .	\$0 05	\$0 20	\$0 60	\$1 10
Davis Perfect . . . . .	10	25	80	2 50
Early Green Cluster . . . . .	05	20	75	1 25
Fordhook Famous . . . . .	05	20	60	1 10
White Spine, Arlington . . . . .	05	20	60	1 10
White Spine, Bassi's Improved . . . . .	05	20	60	1 10
White Spine, Extra-long Perfected . . . . .	05	20	60	1 10
Long Green, Improved . . . . .	05	20	75	1 35
CRESS, Curled . . . . .	05	15	50	1 50
True Water Cress . . . . .	15	55	1 95	7 00
	Pkt.	½oz.	Oz.	¼lb.
EGGPLANT, Improved New York Spineless . . . . .	\$0 15	\$0 40	\$0 70	\$2 50
Black Beauty . . . . .	15	45	75	2 75
Black Pekin . . . . .	15	45	75	2 75
ENDIVE, Green-Curled Winter . . . . .	10		25	80
Broad-leaved . . . . .	10		25	80
KALE, or BORECOLE, Curled Dwarf Green Scotch . . . . .	15		30	1 00
Curled Tall Green Scotch . . . . .			30	85
Curled Siberian Improved . . . . .	10		25	75
Thousand-headed . . . . .			30	85
KOHLRABI, Early White . . . . .	10		30	90
Early Purple . . . . .	10		25	80
Imperial Green . . . . .	10		25	80
	Pkt.	Oz.	¼lb.	½lb.
LEEK, American Flag . . . . .	\$0 10	\$0 30	\$0 90	\$3 00
Large Rouen . . . . .	10	40	1 25	4 00
Large Carentan . . . . .	10	40	1 25	4 00
LETTUCE, Big Boston . . . . .	10	25	80	2 50
Buttercup . . . . .	05	15	50	1 50
Crisp-as-Ice . . . . .	10	30	1 00	3 50
Denver Market . . . . .	05	15	50	1 50
Giant Crystal Head . . . . .	05	15	50	1 50
Golden Queen . . . . .	10	25	80	2 50
Grand Rapids Forcing . . . . .	10	25	80	2 50
Iceberg . . . . .	10	25	80	2 50
Maximum . . . . .	05	20	60	2 00
New York Cabbage . . . . .	05	40	1 25	4 00
Salamander Improved . . . . .	05	25	80	2 50
Black-seeded Simpson . . . . .	10	20	55	1 75
Tennisball, White-seeded . . . . .	10	20	65	2 00
Tennisball, Black-seeded . . . . .	10	20	65	2 00
Wayahead . . . . .	10	30	90	3 00
Romaine, or Cos Lettuce, Bath . . . . .	05	15	50	1 75
White Paris . . . . .	10	20	65	2 00
Trianon . . . . .	10	25	80	2 50
MUSTARD, Fordhook Fancy . . . . .	10	20	65	2 00
MUSKMELON, Brockway's Sport . . . . .	05			
Emerald Gem . . . . .	10	20	65	2 00
Paul Rose . . . . .	10	20	65	2 00
Surprise . . . . .	05	20	60	\$1 15
Baltimore Market . . . . .	05	20	60	1 10
Bay View Hybrid . . . . .	05	20	60	1 10
Eden Gem . . . . .	05	20	60	1 00
Hackensack . . . . .	05	20	60	1 10
Long Island Beauty . . . . .	05	20	60	1 15
Netted Rock . . . . .	05	20	60	1 10
Rocky Ford . . . . .	10	25	80	1 35
Banana Citron . . . . .	05	20	60	1 10
WATERMELON, Cuban Queen . . . . .	05	15	40	1 25
Ice Cream, or Peerless . . . . .	05	15	40	1 25
Kleckley Sweets . . . . .	10	20	65	2 00
Mountain Sweet . . . . .	05	15	40	1 25
NASTURTIUM, Tall Mixed . . . . .	10	25	75	2 00
Dwarf Mixed . . . . .	10	25	75	2 00

## SEEDSMEN, FLORISTS, LANDSCAPE DESIGNERS

	Pkt.	Oz.	¼lb.	Lb.
<b>OKRA, or GUMBO, White Velvet</b> . . . . .	\$0 05	\$0 15	\$0 50	\$1 50
Perkins' Mammoth . . . . .	05	10	30	1 00
	Pkt.	½oz.	Oz.	¼lb.
<b>ONION, White Early Barletta</b> \$0 10	\$0 25	\$0 40	\$1 25	
White Portugal . . . . .	10	25	40	1 25
White Globe . . . . .	10	25	40	1 25
Tripoli . . . . .	10	25	40	1 25
Yellow Danvers . . . . .	10	25	40	1 25
Yellow Globe Danvers . . . . .	10	20	30	1 00
Large Yellow Globe . . . . .	10	20	30	85
Yellow Giant Rocca . . . . .	10	25	40	1 25
Prizetaker . . . . .	15	30	45	1 50
Large Wethersfield . . . . .	10	20	30	90
Large Red Globe . . . . .	10	25	40	1 25
Early Flat Red . . . . .	10	20	30	85
				Lb.
<b>PARSLEY, Extra Curled</b> . . . . .	05	15	40	1 25
Champion Moss Curled . . . . .	10	20	65	2 00
<b>PARSNIP, Bassi's Hollow Crown</b> . . . . .	10	20	55	1 75
				Lb.
<b>PEAS, Abundance</b> . . . . .	15			\$1 75
Alaska . . . . .				1 00
American Wonder . . . . .				2 10
Champion of England . . . . .				2 10
Dwarf Champion . . . . .	15			1 80
Gradus . . . . .	10			2 10
Laxtonian . . . . .				2 35
Nott's Excelsior . . . . .				2 10
Sutton's Excelsior . . . . .				2 10
Thomas Laxton . . . . .				2 10
Admiral Dewey . . . . .	15			2 50
Stratagem . . . . .	15			2 50
Telephone . . . . .	10			2 10
Mammoth Melting (Edible pods) . . . . .				2 60
				Lb.
<b>PEPPER, Large Bell</b> . . . . .	10	40	70	2 50
Chinese Giant . . . . .	15	55	90	3 00
Long Red Cayenne . . . . .	15	45	75	2 75
Perfection Sweet . . . . .	15	45	75	2 75
Red Cherry . . . . .	15	40	70	2 50
Royal King . . . . .	15	45	75	2 75
Ruby King . . . . .	15	45	75	2 75
				Lb.
<b>PUMPKIN, Large Cheese</b> . . . . .	Pkt.	Oz.	¼lb.	Lb.
Quaker Pie . . . . .	\$0 10	\$0 20	\$0 55	\$1 75
Winter Luxury . . . . .	05	20	60	2 00
Connecticut Field . . . . .	10	25	75	2 50
Tennessee Sweet Potato . . . . .	05	15	40	1 25
				Lb.
<b>RADISH, Early Scarlet, White-tipped</b> . . . . .	05	15	45	1 25
Early Scarlet Globe . . . . .	10	20	60	2 00
Early Crimson Giant Forcing . . . . .	05	15	50	1 50
Early White Box . . . . .	05	15	50	1 50
Large White Summer . . . . .	05	15	50	1 60
French Breakfast . . . . .	10	20	60	2 00
Olive-shaped Scarlet . . . . .	10	20	60	2 00
Long Icicle . . . . .	10	20	60	2 00
White Strasburg Summer . . . . .	10	20	60	2 00
				Lb.
<b>RHUBARB, Victoria</b> . . . . .	10	30	1 00	3 00
<b>SALSIFY, Long White French</b> . . . . .	10	30	85	3 00
Mammoth Sandwich Island . . . . .	10	25	75	2 75
<b>SORREL, Mammoth</b> . . . . .	10	35	1 25	4 00
<b>SPINACH, Curled-leaved Savoy</b> . . . . .	05	10	25	75
Long-standing . . . . .	05	10	25	75
Victoria . . . . .	05	15	30	1 00
Prickly, or Winter . . . . .	10	20	40	1 25
New Zealand Summer . . . . .	10	20	65	2 00

**BASSI FRÈRES, INC., DE PARIS, NEW ROCHELLE, N. Y.**

	Pkt.	½oz.	Oz.	¼lb.	Lb.
<b>SQUASH, Fordhook White Bush</b> . . . . .	\$o 05		\$o 25	\$o 75	\$2 50
Summer Crookneck . . . . .	10		25	80	2 50
Early White Scallop Bush . . . . .	05		25	75	2 50
Fordhook . . . . .	05		25	75	2 50
Hubbard . . . . .	10		25	80	2 50
Golden Hubbard . . . . .	10		25	80	2 50
Delicious . . . . .	10		25	80	2 50
<b>TOMATO, Bonny Best</b> . . . . .	10	\$o 25	40	1 40	5 00
Acme . . . . .	10	20	35	1 30	4 50
Earliana . . . . .	10	25	45	1 50	5 50
Dwarf Champion . . . . .	10	25	45	1 50	5 50
John Baer . . . . .	15	65	1 25	4 50	15 00
Dwarf Stone . . . . .	10	25	45	1 50	5 50
Trophy . . . . .	10	30	50	1 50	
Red Cherry . . . . .	10	30	50	1 75	
Red Peach . . . . .	10	30	50	1 75	
Strawberry . . . . .	10	30	50	1 75	
Yellow Peach . . . . .	10	30	50	1 75	
<b>TURNIP, Early Snowball</b> . . . . .	10		25	80	2 50
Early Purple-Top Milan . . . . .	10		30	90	3 00
Early White Milan . . . . .	10		30	1 00	3 25
White Egg . . . . .	10		20	60	2 00
Amber Globe . . . . .	10		20	60	2 00
Golden Ball . . . . .	10		20	60	2 00
<b>RUTABAGA, Budlong White Rock</b> . . . . .			15	50	1 50
Champion Purple-Top . . . . .			15	50	1 50
White . . . . .			15	50	1 50
Yellow Perfection . . . . .			15	50	1 50
<b>HERBS, Anise</b> . . . . .	10		30		
Basil, Sweet . . . . .	10		25		
Caraway . . . . .	10		20	65	
Coriander . . . . .			15	35	1 00
Dill, Mammoth . . . . .	10		20	65	
Fennel, Florence . . . . .	10		25	80	
Lavender . . . . .	20		75		
Marigold, Pot. . . . .	10		40		
Marjoram, Sweet . . . . .	15		50		
Mint (Peppermint) . . . . .	25				
Sage, Broad-leaved . . . . .	15		50		
Savory, Summer . . . . .	15		40		
Savory, Winter . . . . .	15		40		
Thyme, English . . . . .	15		50		
Thyme, French . . . . .	25		2 00		
Tarragon (roots) . . . . .		50 cts. each, \$4 for 10			
<b>MUSHROOM SPAWN, American Pure-Culture Spawn.</b> 35 cts. per brick, \$3.25 for 10 bricks, \$7 for 25 bricks, \$25 per 100 bricks.					
<b>ONION SETS, Yellow</b> . . . . .			Qt. \$o 30	½pk. \$1 10	Pk. \$2 00
White . . . . .			35	1 30	2 50
Red . . . . .			30	1 10	2 00
<b>POTATOES, Irish Cobbler</b> . . . . .		½pk. \$o 85	Pk. \$1 50	¼bus. \$2 50	Bus. \$4 50
Early Rose . . . . .		85	1 50	2 50	4 50
Beauty of Hebron . . . . .		90	1 50	2 50	4 50
Carman . . . . .		85	1 50	2 50	4 50
Green Mountain . . . . .		85	1 50	2 50	4 50

**LAWN GRASS AND FERTILIZERS**

For revised prices see inside back cover

**BASSI FRERES, Inc.**

de PARIS

NEW ROCHELLE

:

NEW YORK



# CHOICE VEGETABLE SEEDS

## ASPARAGUS

Seed should be sown an inch deep, in rows 6 inches apart. After a year's growth the plants may be transplanted to permanent beds, with rows 3 feet apart, separated 2 feet in the row. Plow deeply before setting the plants and turn in rotted manure. Cut when the shoots are 5 inches above the surface of the ground. Cut down the plants in late fall and burn them.

Oz. 10 cts., 1/4 lb. 30 cts., lb. \$1

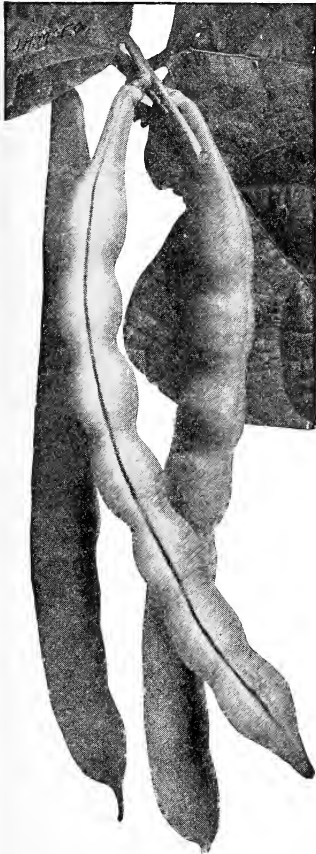
**Colossal.** One of the best. Similar to Argenteuil.

**Palmetto.** Originated in the South; a green variety.

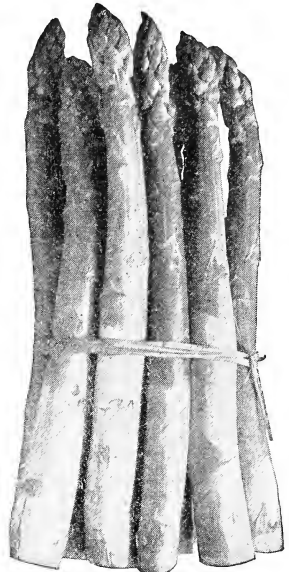
**Giant Argenteuil.** French variety; somewhat larger than Colossal.

### Asparagus Roots

*Plant either in spring or fall*



No strings to Refugee Beans



Asparagus tastes better from your own garden

**Colossal.** 2-year, 60 cts. for 50, \$1 per 100, \$9 per 1,000; 3-year, \$1 for 50, \$1.50 per 100, \$14 per 1,000; 4-year, for forcing, \$1.50 for 50, \$2.25 per 100, \$20 per 1,000.

**Palmetto.** 2-year, 60 cts. for 50, \$1 per 100, \$9 per 1,000.

## BEANS

You can plant Beans and have them on your table six weeks later. Naturally, good soil gives the best results, but they will produce a crop almost anywhere.

**Bountiful.** Extra early; stringless. Lb. 40 cts., 2 lbs. 75 cts., 5 lbs. \$1.75.

**Dwarf Horticultural.** Can be used as a Shell Bean; equally good as a Snap Bean. Lb. 40 cts., 2 lbs. 75 cts., 5 lbs. \$1.75.

**Full Measure.** Entirely stringless; large, firm pods. Lb. 40 cts., 2 lbs. 75 cts., 5 lbs. \$1.75.

**Stringless Green-Pod.** Decidedly curved; extra early; stringless. Lb. 40 cts., 2 lbs. 75 cts., 5 lbs. \$1.75.

**Giant Stringless Green-Pod.** Long-podded strain of above. Lb. 40 cts., 2 lbs. 75 cts., 5 lbs. \$1.75.

**Masterpiece (Sutton's).** Fine Bean for forcing; long, straight, pods. Lb. 75 cts., 2 lbs. \$1.45, 5 lbs. \$3.50.

**Longfellow.** Long, straight pods, stringless when young; very early. Lb. 35c., 2 lbs. 65c., 5 lbs. \$1.50.

**Extra-Early Valentine.** Round, solid pods; extra-fine flavor. Lb. 35 cts., 2 lbs. 65 cts., 5 lbs. \$1.50.

**Black Valentine.** Resembles Valentine, but with black seeds. Lb. 30 cts., 2 lbs. 55 cts., 5 lbs. \$1.25.

**Long Yellow Six-Weeks.** Early; full pods of good quality. Lb. 30 cts., 2 lbs. 55 cts., 5 lbs. \$1.25.

**Round Yellow Six-Weeks.** Like above, with rounded pods. Lb. 30 cts., 2 lbs. 55 cts., 5 lbs. \$1.25.

**Refugee Stringless.** Lb. 40 cts., 2 lbs. 75 cts., 5 lbs. \$1.75.

*Early Planting Means Early Crops — Order Now*



Golden Wax, Improved,  
are stringless and prolific

#### BEANS, continued

**Refugee Late, or 1,000-to-1.** Medium to late; exquisite flavor. Lb. 35 cts., 2 lbs. 65 cts., 5 lbs. \$1.50.

**Mohawk.** Very productive and hardy. Lb. 40 cts., 2 lbs. 75 cts., 5 lbs. \$1.75.

**Green-seeded Flageolet.** Fine as a String Bean, and also used as a Shell Bean when young. Lb. 75c., 2 lbs. \$1.45, 5 lbs. \$3.50.

#### English Dwarf Beans

Similar to Snap Beans, except that they are as hardy as peas and should be planted as soon as the ground can be worked. Seed may be sown under glass in February and planted out when weather warms.

**Broad Windsor.** Best of the varieties offered. Lb. 60 cts., 2 lbs. \$1.10, 5 lbs. \$2.50.

#### Dwarf Wax Beans

Except where noted: Lb. 40 cts., 2 lbs. 75 cts., 5 lbs. \$1.75

**Black Wax, Improved Prolific.** Early; stringless; fine quality.

**Black Wax, Currie's Rustproof.** Flat pods; productive.

**Golden Wax, Improved.** Less liable to blight than Golden Wax.

**Refugee Wax, Stringless.** Brittle waxy pods; for early or late sowing.

**Valentine Wax.** Excellent when young; round and meaty. Lb. 50 cts., 2 lbs. 90 cts., 5 lbs. \$2.10.

**Wardwell's Kidney Wax.** Early; handsome in appearance; stringless. Lb. 50 cts., 2 lbs. 90 cts., 5 lbs. \$2.10.

#### Dwarf Lima and Dwarf White Beans

Plant only when all danger of frost is over. Soil should preferably be light and rich. One pound will plant about 50 feet of drill.

**Thorburn's Dwarf Lima.** A dwarf form of the famous Challenger Lima; similar in flavor and in size of pods. Lb. 60 cts., 2 lbs. \$1.10, 5 lbs. \$2.50.

**Burpee's Improved Bush Lima.** Immense pods and Beans; larger than Burpee's Bush Lima. Lb. 55 cts., 2 lbs. \$1, 5 lbs. \$2.30.

**Henderson's Bush Lima, or Dwarf Sieva.** Beans small but of fine quality. Lb. 40 cts., 2 lbs. 75 cts., 5 lbs. \$1.75.

**New Wonder Bush Lima.** Similar to Burpee's Bush Lima. Lb. 50 cts., 2 lbs. 90 cts., 5 lbs. \$2.10.

**White Kidney.** Excellent green or as a Shell Bean. Lb. 25 cts., 2 lbs. 45 cts., 5 lbs. \$1.

**Red Kidney.** Can be used either green or dried. Lb. 25 cts., 2 lbs. 45 cts., 5 lbs. \$1.

**White Navy.** Commonly used for Boston baked beans. Lb. 25c., 2 lbs. 45c., 5 lbs. \$1.

#### Pole Beans

Pole Beans should be planted in hills and some support must be given them. The hills should be about 4 feet apart, with 4 or 5 Beans to the hill. Allow a quart to 100 hills. Set poles before planting seeds.

**Challenger Lima.** Thick and productive. Lb. 50 cts., 2 lbs. 90 cts., 5 lbs. \$2.10.

**Early Jersey.** Very early for large Beans. Lb. 40 cts., 2 lbs. 75 cts., 5 lbs. \$1.75.

**King of the Garden.** Late; extremely large. Lb. 50 cts., 2 lbs. 90 cts., 5 lbs. \$2.10.

**Leviathan.** Early; prolific. Lb. 45 cts., 2 lbs. 85 cts., 5 lbs. \$2.

**Small Sieva, or Carolina.** Earlier than most sorts. Lb. 40 cts., 2 lbs. 75 cts., 5 lbs. \$1.75.

**Horticultural Pole.** Can be used as a Snap or Shell Bean. Lb. 35 cts., 2 lbs. 65 cts., 5 lbs. \$1.50.

**Kentucky Wonder.** Pods long and flat; extremely prolific. Lb. 35 cts., 2 lbs. 65 cts., 5 lbs. \$1.50.

**Scarlet Runner.** Quite ornamental; good for String Beans. Lb. 50 cts., 2 lbs. 90 cts., 5 lbs. \$2.10.

**Yard-Long French.** Pods occasionally reach 3 feet long and should be grown on brush. Lb. 60c., 2 lbs. \$1.10, 5 lbs. \$2.50.

## BEET

Sow as soon as the soil can be worked. Fertilize the ground well and fine it thoroughly. For long Beets the ground must be stirred deeply. One ounce to 50 feet of drill; 6 pounds to the acre.

Price, except where noted, pkt. 5 cts., oz. 15 cts.,  $\frac{1}{4}$ lb. 50 cts., lb. \$1.50

**Bassano.** Early; very sweet.

**Crimson Globe.** Globe shaped; deep crimson; tender.

**Crosby's Egyptian.** An extra-early sort; generally first on the market.

**Detroit Dark Red.** Round; blood-red; a favorite. Oz. 15 cts.,  $\frac{1}{4}$ lb. 50 cts., lb. \$1.75.

**Early Blood Turnip.** Fine flavor; seldom gets stringy. Oz. 15 cts.,  $\frac{1}{4}$ lb. 50 cts., lb. \$1.75.

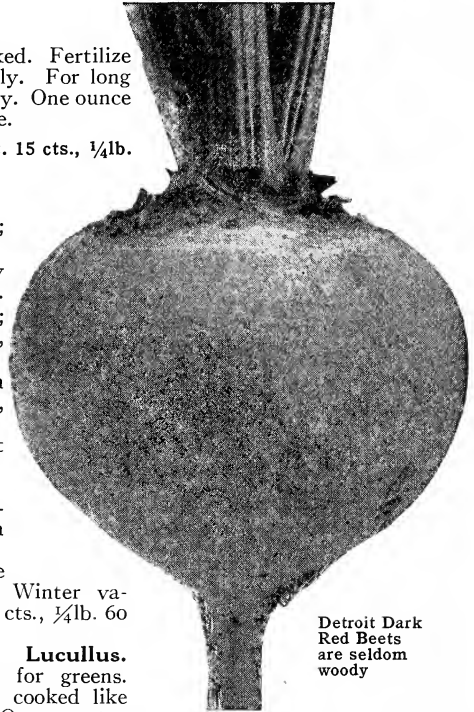
**Early Blood Turnip.** An excellent winter Beet.

**Eclipse.** Bright red; quite early.

**Edmand's Blood Turnip.** Very regular in shape and also good in quality.

**Long Smooth Blood.** Grows above the ground. Winter variety. Oz. 20 cts.,  $\frac{1}{4}$ lb. 60 cts., lb. \$2.

**Swiss Chard, Lucullus.** Largely used for greens. Ribs may be cooked like asparagus. Oz. 15 cts.,  $\frac{1}{4}$ lb. 50 cts., lb. \$1.80.



Detroit Dark Red Beets are seldom woody



Brussels Sprouts

## MANGEL-WURZEL AND SUGAR BEET

Mangels require a deep, rich soil. Plow a foot to 18 inches deep and apply plenty of manure. Sow in May or June, in rows 2 feet apart; thin to 12 inches in a row. Dig crop when frost occurs. Can be kept in pits for winter use. Sow 7 pounds to the acre.

**Giant Half Sugar.** Red skin; white flesh. Oz. 15 cts.,  $\frac{1}{4}$ lb. 40 cts., lb. \$1.25.

**Golden Tankard.** Large; bright yellow skin. Oz. 15 cts.,  $\frac{1}{4}$ lb. 40 cts., lb. \$1.25.

**Klein Wanzleben.** Rich, productive sort. Oz. 15 cts.,  $\frac{1}{4}$ lb. 50 cts., lb. \$1.75.

## BROCCOLI

Sow in drills in early spring and transplant when plants are 4 inches high; set 2 feet apart each way and cultivate same as cabbage; bleach same as cauliflower.

**Early White.** Pkt. 10 cts., oz. 50 cts.,  $\frac{1}{4}$ lb. \$1.50.

**St. James.** Late. Pkt. 10 cts., oz. 50 cts.,  $\frac{1}{4}$ lb. \$1.50.

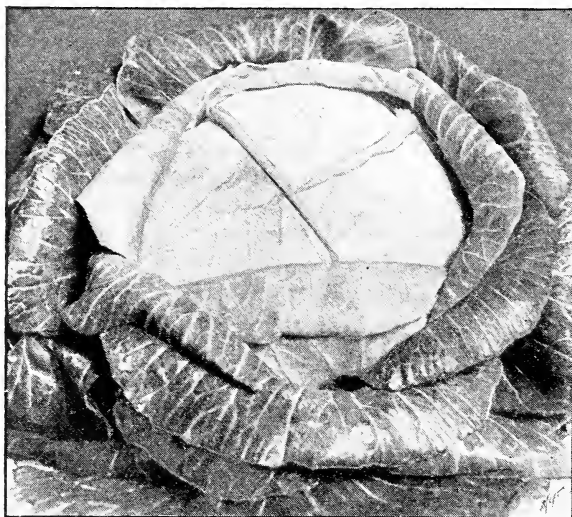
## BRUSSELS SPROUTS

Culture of Sprouts is about the same as cabbage, except that when the stalks are fully grown the lower leaves should be removed to give the Sprouts more room to develop.

**Dalkeith.** Dwarf; large, solid. Pkt. 10 cts., oz. 40 cts.,  $\frac{1}{4}$ lb. \$1.25.

**Dwarf Improved.** Splendid sort for the home-garden. Pkt. 10 cts., oz. 40 cts.,  $\frac{1}{4}$ lb. \$1.25.

**Sharpe's Standard.** Tall. Pkt. 10 cts., oz. 50 cts.,  $\frac{1}{4}$ lb. \$1.50.



Succession produces solid heads

- Charleston Wakefield.** Larger than the above. Oz. 45 cts.,  $\frac{1}{4}$ lb. \$1.25, lb. \$4.50.  
**Early Flat Dutch, Stein's.** Generally used for forcing.  
**Early Summer.** (Second-early.) Produces large, solid heads.  
**Succession Improved.** Second-crop variety; large, solid heads. Oz. 35 cts.,  $\frac{1}{4}$ lb. \$1, lb. \$3.50.  
**Large Late Drumhead Champion.** Many leaves; good keeper.  
**Large Late Flat Dutch.** (Winter Cabbage.) Universal favorite.  
**Red Dutch.** Generally used for pickling. Oz. 50 cts.,  $\frac{1}{4}$ lb. \$1.50, lb. \$5.  
**Savoy, Early Ulm.** Medium size; very early. Oz. 50 cts.,  $\frac{1}{4}$ lb. \$1.50, lb. \$5.  
**Savoy, Late Drumhead.** Finely curled; large.  
**Chinese (Pe-Tsai).** Commonly known as Celery Cabbage. Oz. 45 cts.,  $\frac{1}{4}$ lb. \$1.25, lb. \$4.50.

## CAULIFLOWER

Culture is same as for cabbage, except that more fertilizer and water are required. A heavy mulch of straw or hay will be appreciated by the plants. Start seed under glass the early part of March and set out when soil is in good condition in April.

- Early Dwarf Erfurt.** Best and earliest for forcing; dwarf and compact; short stems and small leaves. Pkt. 50 cts.,  $\frac{1}{4}$ oz. \$2.75,  $\frac{1}{2}$ oz. \$4.50, oz. \$8.  
**Danish Giant, or Dry Weather.** Later than Early Erfurt; pure white. Pkt. 50 cts.,  $\frac{1}{4}$ oz. \$2,  $\frac{1}{2}$ oz. \$3.50, oz. \$6.  
**Extra-Early Paris.** Medium-sized heads; first-class. Pkt. 25 cts.,  $\frac{1}{4}$ oz. \$1.25,  $\frac{1}{2}$ oz. \$2, oz. \$3.50.  
**Autumn Giant.** Very large; late; vigorous. Pkt. 10 cts., oz. 60 cts.,  $\frac{1}{4}$ lb. \$2.



Pe-Tsai is easy to grow

## CARDOON

- Large, Solid.** Smooth; grows about 4 feet high. Sow an inch deep in rows, with rows 3 or 4 feet apart. When fully grown, earth up like celery. Pkt. 10 cts., oz. 40 cts.,  $\frac{1}{4}$ lb. \$1.25, lb. \$4.



Danish Giant Cauliflower

## CABBAGE

Cabbage demands a rich, heavy soil and good drainage. It is almost impossible to fertilize too heavily. Early Cabbage can be started under glass in March. Sow late varieties in the open ground in May. Plant about 2 feet apart each direction. One ounce of seed will produce about 2,000 plants.

Prices, except where noted, pkt. 10 cts., oz. 40 cts.,  $\frac{1}{4}$ lb. \$1.15, lb. \$4.

**Allhead.** Large and solid; quite early.

**Copenhagen Market.** The finest early Cabbage; round head. Oz. 65c.,  $\frac{1}{4}$ lb. \$1.75, lb. \$6.50.

**Early Jersey Wakefield.** Pointed heads; very little superfluous foliage. Oz. 45 cts.,  $\frac{1}{4}$ lb. \$1.25, lb. \$4.50.

Oz. 45 cts.,  $\frac{1}{4}$ lb. \$1.25, lb. \$4.50.

## CARROT

Sow early varieties when ground can be worked; for late crop, the latter part of July. The soil must not be allowed to bake over the seeds. Thin to 5 inches in the row.

Prices, except where noted, oz. 20 cts.,  $\frac{1}{4}$ lb. 60 cts., lb. \$1.75

**Parisian Forcing.** Early and very tender. Oz. 20c.,  $\frac{1}{4}$ lb. 60 cts., lb. \$2.

**Oxheart.** Very thick and short.

**Scarlet Horn.** Early; thick roots; good for forcing. Oz. 20 cts.,  $\frac{1}{4}$ lb. 60 cts., lb. \$2.

**Half-Long Stump-rooted.** The most popular strain for summer use.

**Chantenay, Half-Long.** Early; broad shoulder; orange-red.

**Danvers Half-Long.** Tender; medium length. Good market sort.

**Long Orange.** Used for stock-feeding.



Danvers Half-Long Carrot

## CELERY

Sow early in spring in drills  $\frac{1}{4}$ inch deep. Transplant to 4 inches apart when plants are large enough to handle. About the middle of June set them 6 inches apart, in rows 3 or 4 feet apart. One ounce will produce 2,500 plants.

Prices, except where noted, pkt. 10 cts., oz. 35 cts.,  $\frac{1}{4}$ lb. \$1, lb. \$3.50

**Improved White Plume.** Naturally white foliage. Quite early. Oz. 40 cts.,  $\frac{1}{4}$ lb. \$1.25, lb. \$4.

**Golden Self-blanching.** Unsurpassed as a home-garden or market Celery. Creamy white, crisp stalks. Pkt. 20c., oz. \$1,  $\frac{1}{4}$ lb. \$3, lb. \$10.

**Giant Pascal.** Easily blanched; keeps well.

**Giant Golden-Heart.** Solid and fine flavored. Winter keeper.

**Winter Queen.** Solid; green; winter Celery. Oz. 40 cts.,  $\frac{1}{4}$ lb. \$1.15, lb. \$4.

**Celeriac, Giant Prague.** Large roots; for soups and stews.

**Celeriac, Extra-Early Paris.** Root clean-skinned. Oz. 40c.,  $\frac{1}{4}$ lb. \$1.25, lb. \$4.50.

## CHERVIL

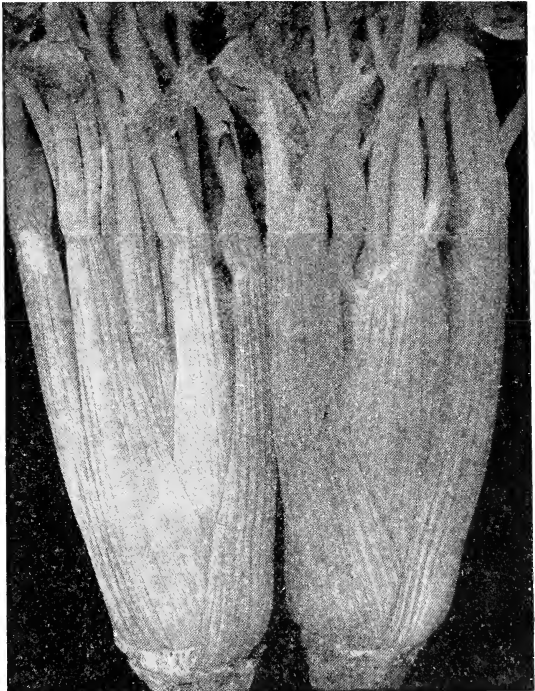
Sow and cultivate like parsley; sowings may be made at any time in the spring. A moist, cool spot in the shade makes the best bed; cuttings may be made several times during the season. The aromatic leaves are used for seasoning.

Prices, except where noted, pkt. 10 cts., oz. 50 cts.

**Curled.** Leaves used for soups and stews.

**Plain.** Like above, but not curled. Oz. 40 cts.

**Tuberous-rooted.** Edible roots.



Golden Self-Blanching, ready for market

## CHICORY

**Witloof.** Commonly known as French Endive. Sow in drills 1 inch deep in June; thin to 6 inches; bank up late in fall. Sow 1 ounce to 100 feet of drill. Pkt. 10 cts., oz. 45 cts.,  $\frac{1}{4}$ lb. \$1.50.

**Witloof Roots.** For forcing and blanching. Roots can be forced in a dark cellar or a mild hotbed. \$1.25 for 20, \$3 for 50, \$5 per 100.



Crisp Witloof Chicory

## SWEET CORN

Plant, when all danger of frost is past, from 1 to 2 inches deep, 3 or 4 feet apart each way, with 4 to 5 kernels to the hill. Thin to 3 plants to a hill, or 12 inches apart in a row. A pound should plant 100 hills.

Prices, except where noted, pkt. 15 cts.,  $\frac{1}{2}$ lb. 25 cts., lb. 45 cts., 5 lbs. \$2, 15 lbs. \$5

**White Cory.** Twelve rows of milky kernels; small.

**Metropolitan.** Handsome large ears; early.  $\frac{1}{2}$ lb. 25 cts., lb. 45 cts., 5 lbs. \$2, 15 lbs. \$5.50.

**Golden Bantam.** Favorably known everywhere.  $\frac{1}{2}$ lb. 30 cts., lb. 50 cts., 5 lbs. \$2.25, 15 lbs. \$6.

**Minnesota.** Larger than Cory; fully as early.  $\frac{1}{2}$ lb. 25 cts., lb. 40 cts., 5 lbs. \$1.75, 15 lbs. \$4.50.

**Kendel's Giant.** Largest of the varieties. Early.  $\frac{1}{2}$ lb. 25 cts., lb. 40 cts., 5 lbs. \$1.75, 15 lbs. \$4.50.

**Crosby's.** Early variety; good quality; largely grown for canning.  $\frac{1}{2}$ lb. 25 cts., lb. 45 cts., 5 lbs. \$2, 15 lbs. \$5.50.

**Howling Mob.** Second-early sort; large size; white and sweet.

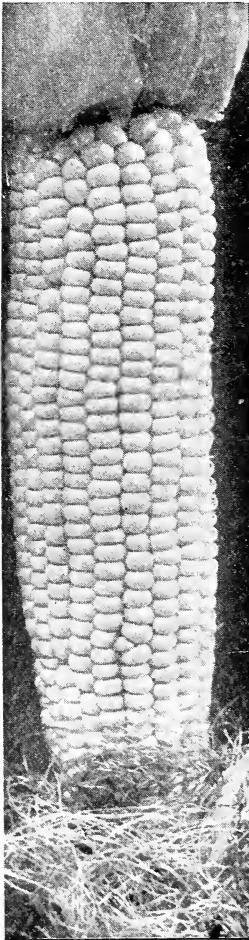
**Stowell's Evergreen.** An old favorite late Corn and best for main crop.

**Golden Evergreen.** Late; sweet, mellow grains.  $\frac{1}{2}$ lb. 30 cts., lb. 50 cts., 5 lbs. \$2.25, 15 lbs. \$6.

**White Evergreen.** Similar to preceding, but with white grains.

**Black Mexican.** Superb flavor; black and white grains.  $\frac{1}{2}$ lb. 25 cts., lb. 45 cts., 5 lbs. \$2, 15 lbs. \$5.50.

**Country Gentleman.** An extra-fine late variety to follow Stowell's Evergreen.  $\frac{1}{2}$ lb. 25 cts., lb. 45 cts., 5 lbs. \$2, 15 lbs. \$5.50.



White Evergreen

## COLLARDS

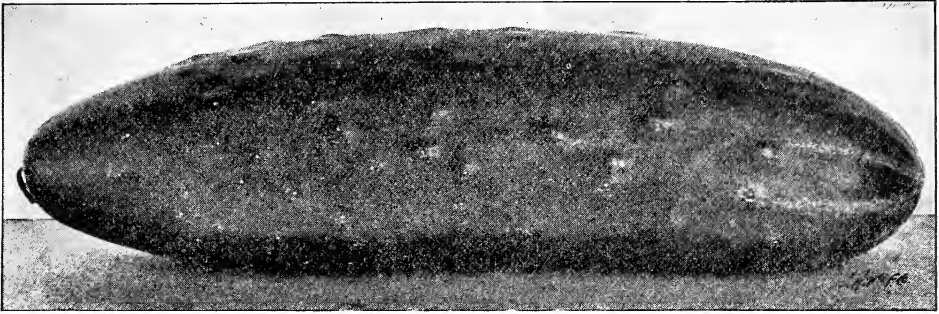
Sow seeds in rich, moist soil; when a month old transplant to 1 foot apart each way.

**Georgia.** Large, loose head. Pkt. 5 cts., oz. 20 cts.,  $\frac{1}{4}$ lb. 60 cts., lb. \$2.

## CORN SALAD or FETTICUS

Sow in drills in August or September for spring use. Soil should be light and warm. Pick leaves when half as large as lettuce.

**Large-seeded.** Pkt. 5 cts., oz. 30 cts.,  $\frac{1}{4}$ lb. 85 cts., lb. \$3.



Bassi's Improved White Spine

## CUCUMBER

Seed may be planted early in spring on pieces of sod or in small pots, and can be easily transplanted when the weather is settled; or it may be sown in hills about June 1. Use whale-oil soap, tobacco water, or Bug Death to control the beetles.

Prices, except where noted, pkt. 5 cts., oz. 15 cts.,  $\frac{1}{4}$ lb. 50 cts., lb. \$1.50

**Cumberland.** Fine pickling variety; firm, crisp, and tender.

**Davis Perfect.** Seeds are comparatively few; valuable for slicing.

**Early Green Cluster.** Fruits small; prolific.

**Fordhook Famous.** Long; straight; does not turn yellow. Oz. 15 cts.,  $\frac{1}{4}$ lb. 45 cts., lb. \$1.25.

**White Spine, Arlington.** Good for forcing or outdoor growing. Oz. 15 cts.,  $\frac{1}{4}$ lb. 45 cts., lb. \$1.25.

**White Spine, Bassi's Improved.** Fruits borne freely; fine for slicing. Pkt. 10 cts., oz. 20 cts.,  $\frac{1}{4}$ lb. 60 cts., lb. \$2.

**White Spine, Extra-Long Perfected.** A strain selected for quality and production.

**Long Green, Improved.** Popular for pickles. Oz. 20 cts.,  $\frac{1}{4}$ lb. 60 cts., lb. \$2.

## CRESS

Sow repeatedly for succession,  $\frac{1}{4}$ inch deep and a foot apart. Soil should be cool, moist, and rich. It is not successful in hot weather.

**Curled.** Pkt. 5 cts., oz. 15 cts.,  $\frac{1}{4}$ lb. 50 cts.

**True Water Cress.** Pkt. 10c., oz. \$1,  $\frac{1}{4}$ lb. \$3.50.

## EGGPLANT

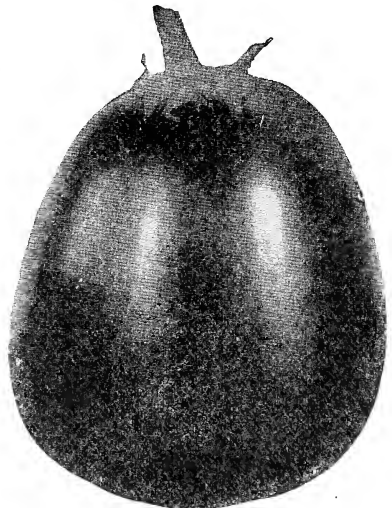
Sow very early in hotbeds and transplant, when 2 inches high, in small pots or thin to 4 inches apart. Do not plant out until the weather is perfectly settled. Give plenty of sunlight.

Prices, except where noted, pkt. 15 cts., oz. 80 cts.,  $\frac{1}{4}$ lb. \$2.75

**Improved New York Spineless.** Deep purple; early and prolific. Oz. 75 cts.,  $\frac{1}{4}$ lb. \$2.50.

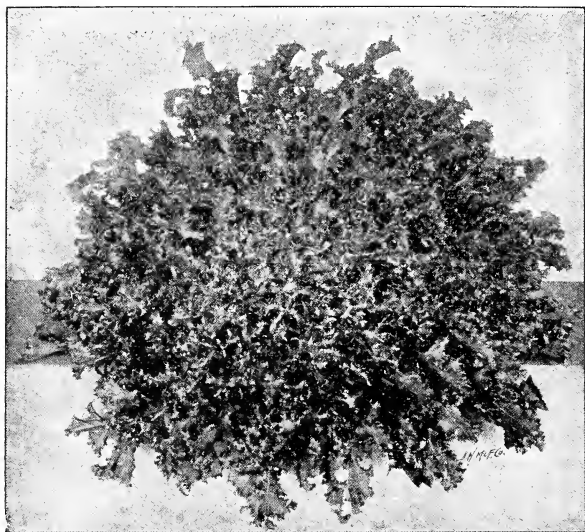
**Black Beauty.** Ten days earlier than the above.

**Black Pekin.** Round; blackish purple; dark foliage.



Black Beauty





Endive

## ENDIVE or Chicory

Sow from June to August in good garden soil; water well. Blanch when leaves are from 6 to 8 inches long. Take up plants at the approach of winter and place them in frames or cellars. An ounce of seed will sow 300 feet of row. The slightly bitter, well-blanchd heads are considered a great delicacy in the winter months.

Prices, pkt. 5 cts., oz. 20 cts.,  
¼lb. 60 cts., lb. \$2

**Green Curled Winter.**  
Standard variety for fall and winter.

**Broad-leaved.** A sweet fall and winter variety.

## KALE or BORECOLE

Cultivated and grown like cabbage. One ounce will sow 100 feet of row.

**Curled Dwarf Green Scotch.** A splendid strain. Pkt. 10 cts., oz. 30 cts., ¼lb. 85 cts., lb. \$3.

**Curled Tall Green Scotch.** Taller than above. Pkt. 10 cts., oz. 30 cts., ¼lb. 85 cts., lb. \$3.

**Curled Siberian Improved.** Hardy; green; curled. Pkt. 5 cts., oz. 20 cts., ¼lb. 60 cts., lb. \$1.75.

**Thousand-headed.** For feeding cattle. Pkt. 5 cts., oz. 20 cts., ¼lb. 60 cts., lb. \$2.

## KOHLRABI

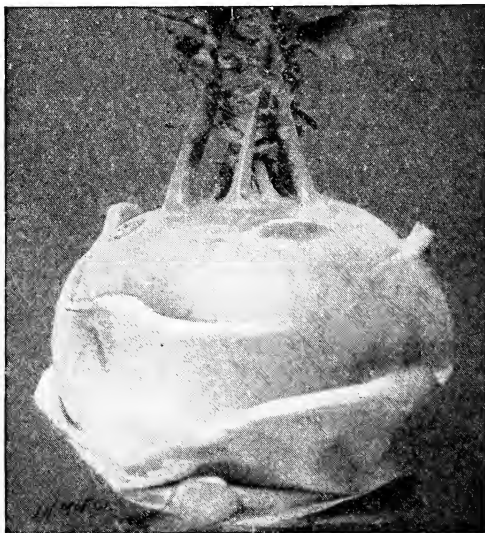
Sow in spring, 1 inch deep, in rows 18 inches apart; thin to 8 to 10 inches apart in row. General culture as for cabbage. Use when they are young, as they become tough when old. There is a good demand for these at all times, but they must be young and tender.

Pkt. 10 cts., each, postpaid

**Early White.** Very delicate in flavor; clear white in color. Oz. 40 cts., ¼lb. \$1, lb. \$3.50.

**Early Purple.** Like the above, excepting color. Oz. 40 cts., ¼lb. \$1, lb. \$3.50.

**Imperial Green.** Used chiefly for stock-feed. Oz. 45 cts., ¼lb. \$1.25.



Kohlrabi



## LETTUCE

Sow the head varieties in hotbeds in March and in the open ground as soon as it can be worked. Plants should stand a foot apart after being transplanted. Lettuce requires good ground, enriched with thoroughly rotted manure.

Pkt. 5 cts., each, postpaid

**Big Boston.** A favorite variety; dull green with a light brown border. Oz. 15 cts.,  $\frac{1}{4}$ lb. 50 cts., lb. \$1.50.

**Buttercup.** Cabbage-headed variety; small to medium in size; late in development. Oz. 15 cts.,  $\frac{1}{4}$ lb. 45 cts., lb. \$1.25.

**Crisp-as-Ice.** Heads slightly pointed, medium size; buttery flavor. Oz. 15 cts.,  $\frac{1}{4}$ lb. 45 cts., lb. \$1.25.

**Denver Market.** Medium to large; heads somewhat soft; decidedly crisp. Oz. 15 cts.,  $\frac{1}{4}$ lb. 50 cts., lb. \$1.40.

**Giant Crystal Head.** Large and late; very crisp. Oz. 15 cts.,  $\frac{1}{4}$ lb. 45 cts., lb. \$1.25.

**Golden Queen.** Small to medium; cabbage head. Oz. 15 cts.,  $\frac{1}{4}$ lb. 50 cts., lb. \$1.50.

**Grand Rapids Forcing.** An excellent loose-leaved variety; light green. Oz. 15 cts.,  $\frac{1}{4}$ lb. 50 cts., lb. \$1.50.

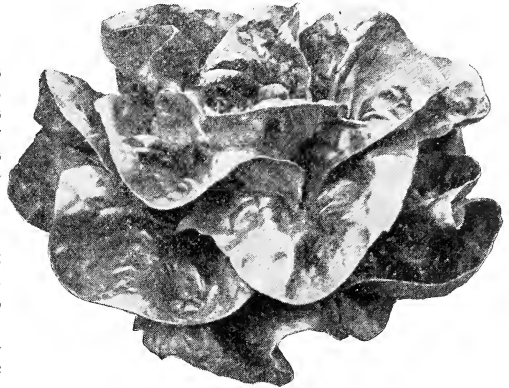
**Iceberg.** Globular head; light green; blanches well. Oz. 20 cts.,  $\frac{1}{4}$ lb. 60 cts., lb. \$2.

**Maximum.** Late maturing; dark green, spotted with brown. Oz. 15 cts.,  $\frac{1}{4}$ lb. 45 cts., lb. \$1.25.

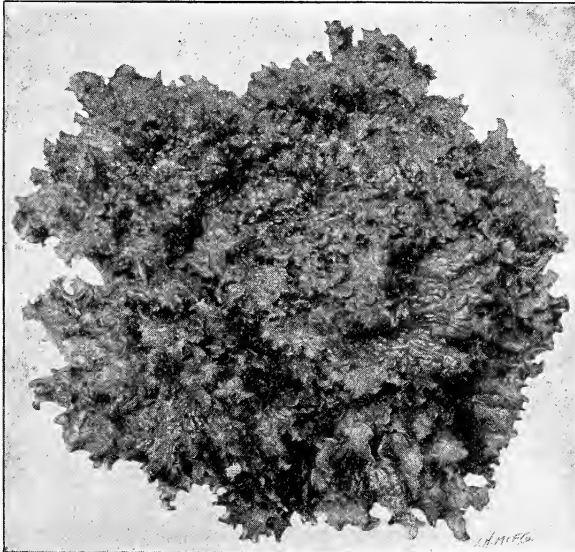
**New York Cabbage.** Large heads, maturing late; broad leaves. Oz. 20 cts.,  $\frac{1}{4}$ lb. 65 cts., lb. \$2.25.

**Salamander Improved.** Medium green in color; good; solid head. Oz. 15 cts.,  $\frac{1}{4}$ lb. 50 cts., lb. \$1.50.

**Black-seeded Simpson.** Good-sized heads; golden yellow heart. Oz. 15 cts.,  $\frac{1}{4}$ lb. 50 cts., lb. \$1.50.



Big Boston, Market-Growers' Favorite



Grand Rapids grows anywhere

**Tennisball, White-seeded.** Small to medium; color dull green. Oz. 15 cts.,  $\frac{1}{4}$ lb. 45 cts., lb. \$1.25.

**Tennisball, Black-seeded.** Cabbage-headed; firm; blanches well. Oz. 15 cts.,  $\frac{1}{4}$ lb. 50 cts., lb. \$1.40.

**Wayahead.** Hard, compact head. Does unusually well. Oz. 15 cts.,  $\frac{1}{4}$ lb. 45 cts., lb. \$1.25.

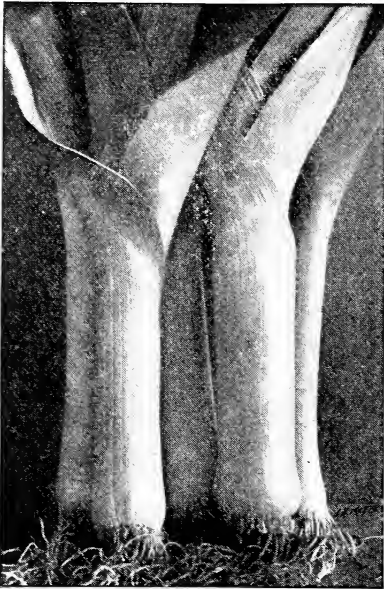
## ROMAINE, or COS LETTUCE

Prices, oz. 15 cts.,  $\frac{1}{4}$ lb. 50 cts., lb. \$1.75

**Bath.** Pale green leaves; blanches well.

**White Paris.** Upright grower; loaf-shaped head.

**Trianon.** Resists heat; firm and blanches well.



Leeks are good as well as novel

## LEEK

Sow in drills early in spring. When 7 inches high transplant to rows 12 inches apart, carefully covering the neck; water thoroughly. Store in cool cellars before winter.

Pkt. 10 cts. each, postpaid

**American Flag.** Hardy and productive sort. Oz. 40 cts.,  $\frac{1}{4}$ lb. \$1.25, lb. \$4.

**Large Rouen.** Fine keeper. Oz. 40 cts.,  $\frac{1}{4}$ lb. \$1.25, lb. \$4.

**Large Carentan.** Dark-colored leaves; stout and hardy. Oz. 45 cts.,  $\frac{1}{4}$ lb. \$1.25, lb. \$4.50.

## MUSHROOM SPAWN

Mushrooms should be grown where a temperature of 50 degrees can be kept through the winter. Prepare a bed of equal parts of loam and manure in layers. Leave this to heat for a few days and when the heat subsides to 90 degrees, place small pieces of spawn about a foot apart each way. After a week, spread a 2-inch layer of fresh soil over the heap and cover with 3 or 4 inches of hay or straw. Do not let the bed get dry. Water used should be of a temperature of about 100 degrees.

**American Pure-Culture Spawn.** Bricks weigh 1 pound. Brick 30 cts., 10 bricks \$2.75, 20 bricks \$5.25, 100 bricks \$25.

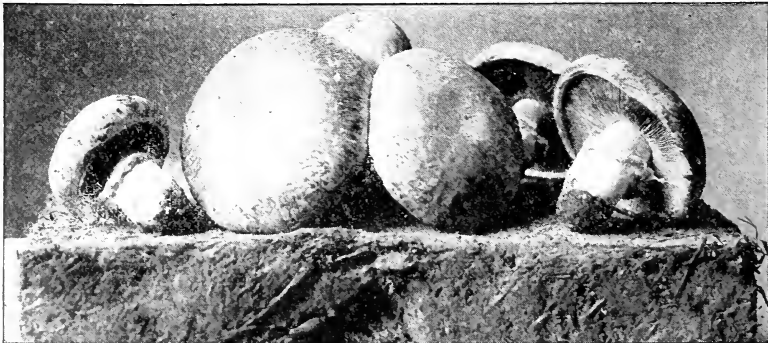
**English Spawn.** Bricks weigh about 1  $\frac{1}{2}$  pounds. Brick 25 cts., 10 bricks \$2.25, 20 bricks \$4, 100 bricks \$18.

If to be sent by parcel post, add postage at zone rate

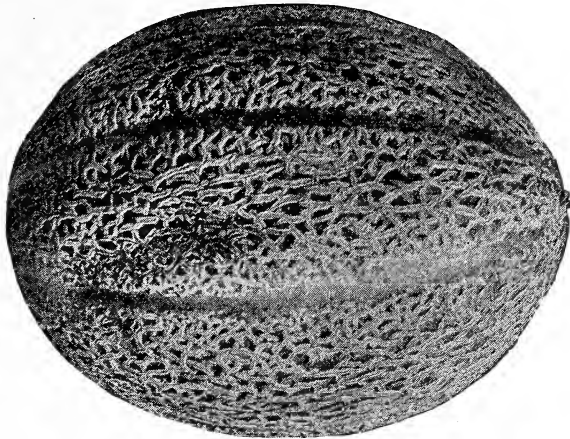
## MUSTARD

Sow in shallow drills in early spring; press the earth down tightly over the seeds. The small, pungent leaves are used like water cress. Can be successfully raised in cold-frames during the winter, if care is taken to partially exclude frost. The plants go to seed shortly after they become ready for use, so weekly sowings should be made if you desire a continuous supply.

**Fordhook Fancy.** Long, dark green leaves, like spinach. Oz. 10 cts.,  $\frac{1}{4}$ lb. 30 cts., lb. \$1.



Mushrooms like these find a ready market.



A choice Rocky Ford from our seeds

## MUSKMELON

Plant 6 to 8 seeds to the hill, which should be 6 feet apart each way; thin to 3 plants; pinch the tips when vines are 1½ feet long. One ounce will plant 80 hills; 1 pound for an acre.

Prices, except where noted, pkt. 5 cts., oz. 20 cts., ¼lb. 60 cts., lb. \$2.

**Brockway's Sport.** Shape is slightly oblong; light red flesh; very sweet. Pkt. 5 cts., oz. 20 cts., ¼lb. 55 cts., lb. \$1.90.

**Emerald Gem.** Sweet; small; white; early. Pkt. 5 cts., oz. 15 cts., ¼lb. 50 cts., lb. \$1.50.

**Paul Rose.** Oval-shaped; orange flesh. Pkt. 5 cts., oz. 20 cts., ¼lb. 55 cts., lb. \$1.90.

**Surprise.** Orange flesh of excellent quality; oblong.

**Baltimore Market.** Green flesh; oblong shape. Oz. 20 cts., ¼lb. 60 cts., lb. \$2.

**Bay View Hybrid.** Large size; flesh green; prolific. Oz. 20 cts., ¼lb. 60 cts., lb. \$2.

**Eden Gem.** Deep green flesh; a good shipping variety. Pkt. 5 cts., oz. 15 cts., ¼lb. 50 cts., lb. \$1.50.

**Hackensack.** Large; popular variety. Oz. 20 cts., ¼lb. 60 cts., lb. \$2.

**Long Island Beauty.** Similar to Hackensack; very beautiful. Pkt. 10 cts., oz. 25 cts., ¼lb. 75 cts., lb. \$2.50.

**Netted Rock.** Produces melons uniform in size and shape. Pkt. 5 cts., oz. 20 cts., ¼lb. 60 cts., lb. \$1.75.

**Rocky Ford.** Improved Netted Gem. Oz. 20 cts., ¼lb. 60 cts., lb. \$2.

### Miscellaneous Muskmelon

**Banana Citron.** Late; cucumber-shaped. Oz. 20 cts., ¼lb. 60 cts., lb. \$2.

## WATERMELON

Culture same as Muskmelons, but hills should be spaced 8 to 10 feet apart.

Prices, except where noted, pkt. 5 cts., oz. 10 cts., ¼lb. 30 cts., lb. \$1.

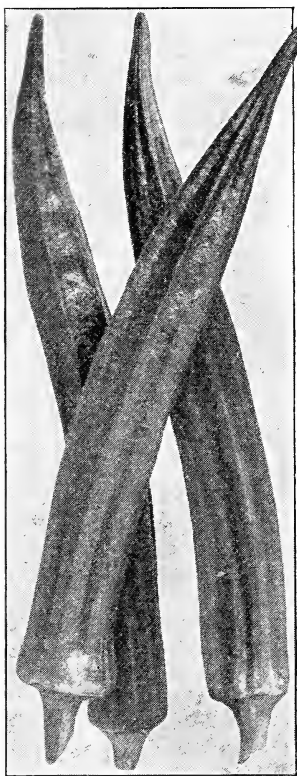
**Cuban Queen.** Oval-shaped; solid and heavy. Pkt. 5 cts., oz. 15 cts., ¼lb. 40 cts., lb. \$1.25.

**Ice Cream, or Peerless.** Deep red flesh; very early. Oz. 10 cts., ¼lb. 30 cts., lb. \$1.

**Kleckley Sweets.** A recognized favorite. Thin rind; flesh very sweet. Oz. 10 cts., ¼lb. 30 cts., lb. \$1.

**Mountain Sweet.** Dark green; long, tapering toward stem. Oz. 10c., ¼lb. 30 cts., lb. \$1.

*Use Nitrate of Soda for quick results. See page 33*



Try Okra this year

## NASTURTIUM

When danger of frost is over, sow 1 inch deep in drills. Tall sorts require trellis or brush support. Seeds are used for flavoring pickles.

Pkt. 5 cts. each, postpaid

**Tall Mixed.** Oz. 15 cts.,  $\frac{1}{4}$ lb. 50 cts., lb. \$1.50.

**Dwarf Mixed.** Oz. 20 cts.,  $\frac{1}{4}$ lb. 60 cts., lb. \$2.

## OKRA, or GUMBO

Sow in drills late in spring; thin out or transplant when 6 inches high. Pick when quite small.

Prices, oz. 10 cts.,  $\frac{1}{4}$ lb. 30 cts., lb. \$1

**White Velvet.** Long, tender, white pods.

**Perkins' Mammoth.** Long pods of excellent flavor.

## ONION

Sow as early as possible in the spring, 4 to 5 pounds to the acre; thin to 4 inches apart and weed thoroughly.

Prices, except where noted, pkt. 10 cts., oz. 30 cts.,  $\frac{1}{4}$ lb. 85 cts., lb. \$3

**White Early Barletta.** Small, white, Italian variety. Pkt. 10 cts., oz. 45 cts.,  $\frac{1}{4}$ lb. \$1.50, lb. \$4.50.

**White Portugal.** The large, flat, market variety.

**White Globe.** A handsome Onion of good size. Pkt. 10 cts., oz. 35 cts.,  $\frac{1}{4}$ lb. \$1, lb. \$3.50.

**Tripoli.** The large, white, Italian variety. Pkt. 10 cts., oz. 45 cts.,  $\frac{1}{4}$ lb. \$1.50, lb. \$4.50.

**Yellow Danvers.** Popular sort; keeps very well.

**Yellow Globe Danvers.** Similar to above, but more rounded.

**Large Yellow Globe.** The best large yellow Onion.

**Yellow Giant Rocca.** Pale yellow sort. Pkt. 10 cts., oz. 45 cts.,  $\frac{1}{4}$ lb. \$1.50, lb. \$4.50.

**Prizetaker.** One of the largest Onions; straw-colored skin. Pkt. 10 cts., oz. 35 cts.,  $\frac{1}{4}$ lb. \$1, lb. \$3.50.

**Australian Brown.** Very early sort; medium size.

**Large Wethersfield.** Medium early; flat; keeps well.

**Large Red Globe.** Exceedingly popular variety. Pkt. 10 cts., oz. 40 cts.,  $\frac{1}{4}$ lb. \$1.25, lb. \$4.

**Early Flat Red.** The best flat Onion; red tinge to skin.



Yellow Globe Danvers are almost perfect

“Bassi Quality” is more than an expression—it means business.

## Onion Sets

Plant in drills 12 inches apart, 4 inches apart in row.

**Yellow Onion Sets.** Lb. 30 cts.

**White Onion Sets.** Lb. 35 cts.

**Red Onion Sets.** Lb. 30 cts.

## PARSLEY

Sow early in spring, in thoroughly pulverized ground. Thin plants to 4 inches.

Prices, pkt. 5 cts., oz. 15 cts.,  $\frac{1}{4}$ lb. 50 cts.,  
lb. \$1.50

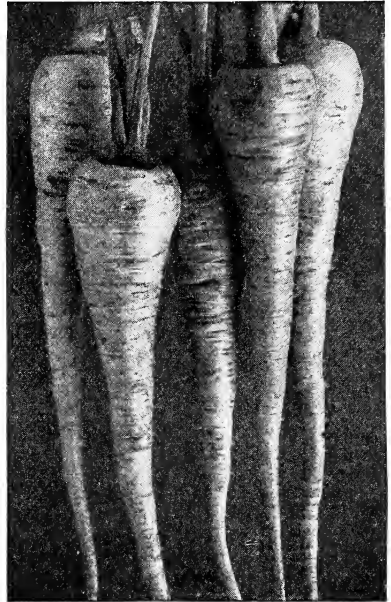
**Extra Curled.** Finely crimped and curled; compact habit.

**Champion Moss Curled.** Deep green; strongly flavored.

## PARSNIP

Sow early in spring in rows 18 inches apart; thin to 8 inches apart in the row. Ground should be deeply dug.

**Bassi's Hollow Crown.** Fine strain for the market-gardener. Pkt. 5 cts., oz. 15 cts.,  $\frac{1}{4}$ lb. 50 cts., lb. \$1.50.



Bassi's Hollow Crown Parsnip

## PEAS

Smooth sorts may be sown as early in the spring as the ground can be worked; wrinkled varieties should be sown later. Sow for succession every two weeks until late July. Use varieties adapted to the season. Allow a pint to 40 feet of drill.

Price, pkt. 15 cts., postpaid

**Abundance.** Pods long and well-filled. Sow thinly. Lb. 45 cts., 2 lbs. 85 cts., 5 lbs. \$2.

**Alaska.** Small blue Pea; very early. Lb. 40 cts., 2 lbs. 75 cts., 5 lbs. \$1.75.

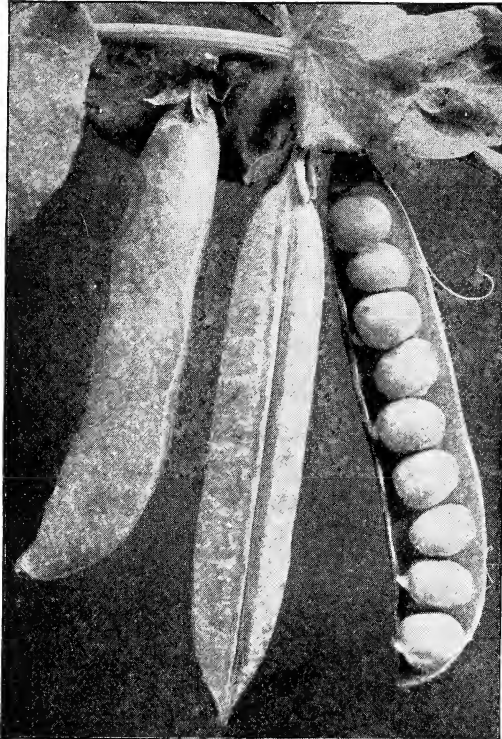
**American Wonder.** Extremely early and productive sort. Lb. 50 cts., 2 lbs. 95 cts., 5 lbs. \$2.25.

**Champion of England.** Wrinkled sort; good climber. Lb. 55 cts., 2 lbs. \$1, 5 lbs. \$2.25.

**Dwarf Champion.** Lb. 55 cts., 2 lbs. \$1, 5 lbs. \$2.25.

**Gradus.** An extra-fine, extra-early Pea; finest quality. Lb. 55 cts., 2 lbs. \$1, 5 lbs. \$2.25.

**Laxtonian.** Large, dark green, curved pods; excellent flavor. Lb. 55 cts., 2 lbs. \$1, 5 lbs. \$2.25.



Gradus Peas

## PEAS, continued

- Nott's Excelsior.** A very prolific wrinkled sort. Lb. 50 cts., 2 lbs. 95 cts., 5 lbs. \$2.25.  
**Richard Seddon.** The best dwarf extra-early.  
**Sutton's Excelsior.** As early as American Wonder; broad pods. Lb. 55 cts., 2 lbs. \$1, 5 lbs. \$2.25.  
**Thomas Laxton.** A cross between Gradus and one of the extra-early sorts. Peas are very large. Lb. 55 cts., 2 lbs. \$1, 5 lbs. \$2.25.

## Main- and Late-Crop Peas

- Admiral Dewey.** A productive sort which has enjoyed great popularity. Lb. 60 cts., 2 lbs. \$1.10, 5 lbs. \$2.50.  
**Stratagem.** Excellent Peas; pods very large. Lb. 55 cts., 2 lbs. \$1, 5 lbs. \$2.25.  
**Telephone.** Pods and Peas of great size. Lb. 60 cts., 2 lbs. \$1.10, 5 lbs. \$2.50.

## Sugar Peas (Edible Pods)

- Mammoth Melting.** One of the most tender sorts. Lb. 55 cts., 2 lbs. \$1, 5 lbs. \$2.25.

## PEPPER

Sow seed in a hotbed in March, when the soil is warm; transplant to rows 2 feet apart and 18 inches apart in the row.

Prices, except where noted, pkt. 15 cts.

- Large Bell.** A dandy pickling variety. Oz. 75 cts.  
**Chinese Giant.** One of the largest; flesh bright scarlet. Oz. \$1.  
**Long Red Cayenne.** Pungent; slender pods. Pkt. 10 cts., oz. 50 cts.  
**Perfection Sweet.** Thin skin; brilliant scarlet; sweet. Oz. 75 cts.  
**Red Cherry.** Cherry-shaped; very hot. Pkt. 10 cts., oz. 60 cts.  
**Royal King.** Thin flesh; better than Ruby King. Oz. 75 cts.  
**Ruby King.** Good-sized; mild. Oz. 75 cts.

## PUMPKIN

Plant in the middle of spring, in hills 10 feet apart each way, 4 seeds to the hill. One ounce will sow 30 hills. Price, pkt. 5 cts.

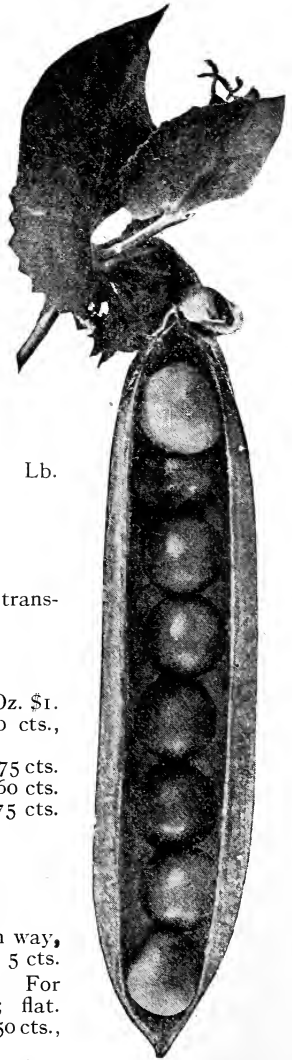
**Large Cheese.** For domestic use; flat. Oz. 15c., ¼lb. 50 cts., lb. \$1.50.

**Quaker Pie.** Prolific; keeps well; good for pies. Oz. 20 cts., ¼lb. 60 cts., lb. \$2.

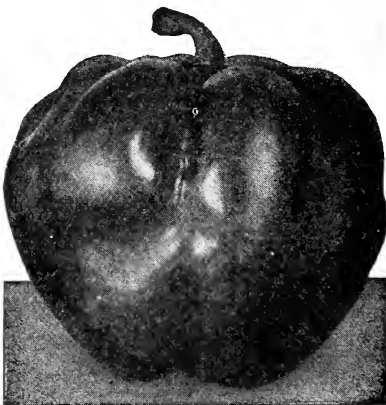
**Winter Luxury.** Excellent for pies; keeps well. Oz. 15 cts., ¼lb. 50 cts., lb. \$1.75.

**Connecticut Field.** A good stock Pumpkin. Oz. 15 cts., ¼lb. 50 cts., lb. \$1.50.

**Tennessee Sweet Potato.** White flesh; bell-shaped; good pie Pumpkin. Oz. 15 cts., ¼lb. 50 cts., lb. \$1.75.



Thomas Laxton Peas



Chinese Giant Pepper

BE SURE TO GET SOME  
OF OUR FLOWER SEEDS

## POTATOES

Prices ruling January 1 are given here; they are subject to market changes.

Prices,  $\frac{1}{2}$ pk. 70 cts., pk. \$1,  $\frac{1}{2}$ bus. \$1.90, bus. \$3.50, bbl. \$9.

### Early

**Irish Cobbler.** An acknowledged favorite; white.

**Early Rose.** One of the best market sorts.

**Beauty of Hebron.** Flesh-colored skin; white flesh of finest quality.



Better Potatoes bring better prices—use our seed

### Intermediate and Late

**Carman.** No. 1. Most desirable second-early sort; always gives big crops.

**Green Mountain.** Late Potato; heavy yielder; both skin and flesh are white.

## RADISH

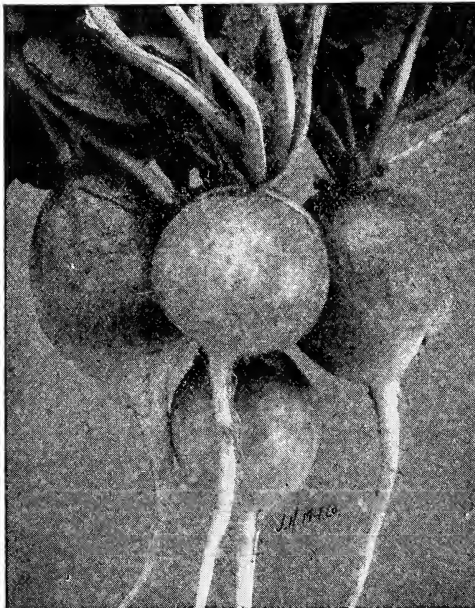
Sow every week for a succession, in drills  $\frac{1}{2}$ inch deep. A few of the Icicle varieties may be grown all summer.

Prices, except where noted, pkt. 5 cts., oz. 15 cts.  $\frac{1}{4}$ lb. 50 cts., lb. \$1.50

**Early Scarlet, White-tipped.** Very early; for frames or outdoors.

**Early Scarlet Globe.** Almost round; beautiful scarlet; crisp.

**Early Crimson Giant Forcing.** Very crisp for such a large Radish. Oz. 15 cts.,  $\frac{1}{4}$ lb. 50 cts., lb. \$1.60.



The best seller—Early Scarlet Globe Radishes

**Early White Box.** Rounded, white sort. Oz. 15 cts.,  $\frac{1}{4}$ lb. 50 cts., lb. \$1.60.

**Large White Summer.** Stands heat better than other sorts.

**French Breakfast.** Delicate flavor. Oz. 15 cts.,  $\frac{1}{4}$ lb. 50 cts., lb. \$1.60.

**Olive-shaped Scarlet.** Good appearance; fine flavor.

**Long Icicle.** Splendid flavor; pure white.

**White Strasburg Summer.** Probably the best summer sort. Oz. 15 cts.,  $\frac{1}{4}$ lb. 50 cts., lb. \$1.75.

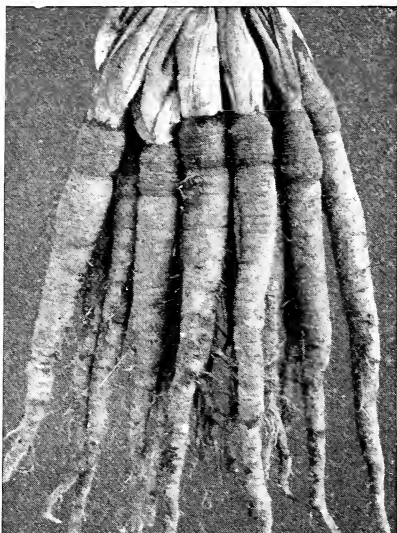
## RHUBARB

Sow seed in drills in coldframes about March 1; do not let the ground freeze. In six weeks transplant to outdoors in rich soil, 12 inches apart. The following spring transplant again 4 to 5 feet apart each way.

**Victoria.** Early, large, and tender. Pkt. 5 cts., oz. 25 cts.,  $\frac{1}{4}$ lb. 75 cts., lb. \$2.50.

*Don't miss Big Boston Lettuce—our seed is fine*





Mammoth Sandwich Island Salsify

growth is essential, so make your soil as light and rich as possible. Nitrate of soda is very beneficial after the plants have made a start; the moisture supply should always be good. Seed sown in August will produce a fall crop, and the plants from a September sowing may be carried through the winter if they are protected by straw or leaves. 10 pounds to the acre; 1 ounce to 100 feet. Seeds of New Zealand Spinach may be placed in hills 2 feet apart each way, three seeds to a hill. Do not cut until the plants get a good start.

Prices, except where noted, pkt. 5 cts., oz. 10 cts.,  $\frac{1}{4}$ lb. 25 cts., lb. 75 cts.

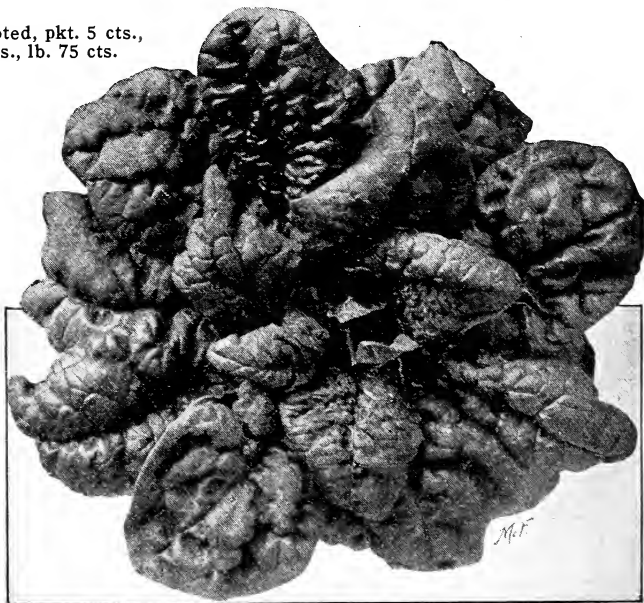
**Curled-leaved Savoy.** Large, curled and wrinkled leaves.

**Long-standing.** Dark green; stands heat well.

**Victoria.** Later than Long-standing.

**Prickly, or Winter.** Recommended for fall sowing. Oz. 15 cts.,  $\frac{1}{4}$ lb. 45 cts., lb. \$1.25.

**New Zealand Summer.** Not a Spinach, but every bit as good. Use the tender tips. It grows well all summer; never minds heat. Oz. 20 cts.,  $\frac{1}{4}$ lb. 60 cts., lb. \$2.



Long-standing Spinach is good for spring sowing

## SALSIFY or VEGETABLE OYSTER

Sow seed early in the spring, in drills a foot apart; thin to 6 inches in the row. Weed thoroughly and cultivate well. Sow 10 pounds to the acre; 1 ounce to 60 feet.

Prices, pkt. 15 cts., oz. 45 cts.,  $\frac{1}{4}$ lb. \$1.25, lb. \$4.50

**Long White French.** Good-sized; delicious.

**Mammoth Sandwich Island.** Extra-large roots.

## SORREL

Sow in spring, in drills 18 inches apart; keep lower stems cut off. Divide roots every five years. Cut and cook like spinach.

**Mammoth.** Pkt. 10 cts., oz. 30 cts.,  $\frac{1}{4}$ lb. \$1.

## SPINACH

Sow in early spring, 1 inch deep, in drills a foot apart. To grow tender Spinach, rapid



## SQUASH

Sow in hills like cucumbers and melons, bush varieties 4 feet apart, running kinds 8 feet apart.

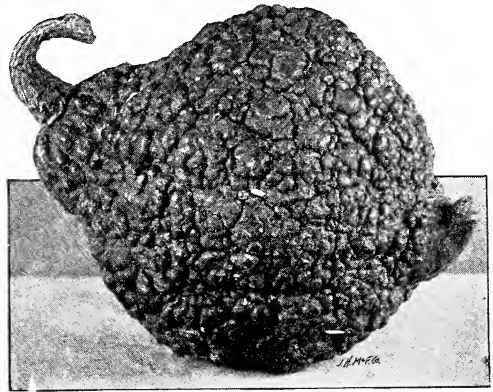
Prices, except where noted, pkt. 5 cts., oz. 25 cts.,  $\frac{1}{4}$ lb. 75 cts.

### Bush Varieties

- Fordhook White Bush.** Oblong fruits; thin yellow skin.  
**Summer Crookneck.** Skin deep orange; flesh yellow; extra good.  
**Early White Scallop Bush.** Ships well; good appearance.

### Running Varieties

- Fordhook.** A splendid winter sort. Oz. 20 cts.,  $\frac{1}{4}$ lb. 60 cts.  
**Hubbard.** Delicious when baked; fine for pies.  
**Golden Hubbard.** Similar to above, but with orange-red skin.  
**Delicious.** Green skin; orange flesh; sweet and dry.



Hubbard Squash—one of the best

## TOMATO

Sow seed in hotbeds in early spring,  $\frac{1}{8}$ inch deep, or in shallow boxes in a window. One ounce will produce 2,000 plants. Transplant to open ground about June 1, 4 feet apart each way.

Prices, except where noted, pkt. 10 cts., oz. 50 cts.,  $\frac{1}{4}$ lb. \$1.50

- Bonny Best.** Extremely early scarlet variety; good market sort.  
**Acme.** Medium size; smooth; early. The attractive scarlet color makes it sell well.  
**Earliana.** Cardinal-scarlet; unusually early. Fruits are large and handsome.  
**Dwarf Champion.** Fruit like Acme; medium size; early. Oz. 50 cts.,  $\frac{1}{4}$ lb. \$1.75.  
**John Baer.** Round; smooth; very popular.  
**Dwarf Stone.** Large fruits; perfect shape. Flesh is of excellent quality.  
**Trophy.** Excellent for canning; vigorous grower. Oz. 50 cts.,  $\frac{1}{4}$ lb. \$1.75.



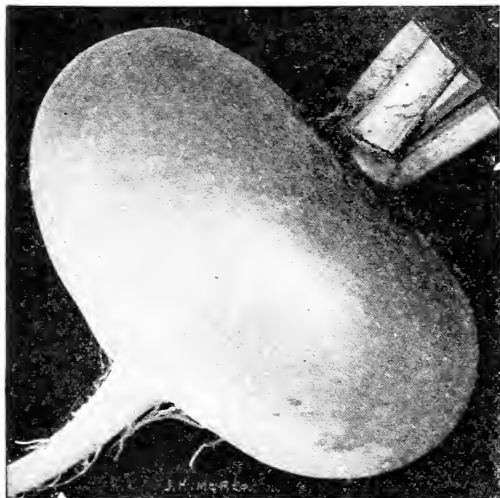
Dwarf Stone Tomato

### Small-Fruited Tomatoes

Prices, pkt. 10 cts., oz. 60 cts., postpaid

- Red Cherry.** A small variety used for pickling.  
**Red Peach.** Similar to a peach; for exhibition and preserves.  
**Strawberry (Winter Cherry, or Husk Tomato).** Yellow; good for pies.  
**Yellow Peach.** Beautiful, clear yellow.

*Fix up those bad spots in the Lawn before summer*



Purple-Top Strap Leaf Turnip

## TURNIP

For early Turnips, sow as soon as ground can be worked in the spring; main crop in July. Biggest crops are obtained by sowing in drills. Sow 1 pound of seed to the acre.

Price, pkt. 5 $\frac{1}{2}$ cts., postpaid

### White Varieties

**Early Snowball.** Small; pure white; rapid grower.

**Early Purple-Top Milan.** Earliest of all; good quality. Oz. 20 cts.,  $\frac{1}{4}$ lb. 60 cts., lb. \$2.

**Early White Milan.** Just as early; exceedingly handsome. Oz. 25 cts.,  $\frac{1}{4}$ lb. 85 cts., lb. \$3.

**White Egg.** Sweet, oval-shaped variety. Oz. 15 cts.,  $\frac{1}{4}$ lb. 50 cts., lb. \$1.75.

### Yellow Varieties

**Amber Globe.** Popular yellow sort. Oz. 15 cts.,  $\frac{1}{4}$ lb. 50 cts., lb. \$1.50.

**Golden Ball.** Fair keeper of good appearance. Oz. 15 cts.,  $\frac{1}{4}$ lb. 50 cts., lb. \$1.50.

## RUTABAGA

**Budlong White Rock.** White and round; early. Oz. 15 cts.,  $\frac{1}{4}$ lb. 50 cts., lb. \$1.50.

**Champion Purple-Top.** Unusually large. Oz. 15 cts.,  $\frac{1}{4}$ lb. 50 cts., lb. \$1.75.

**White Rutabaga.** Handsome appearance. Oz. 15 cts.,  $\frac{1}{4}$ lb. 50 cts., lb. \$1.50.

**Yellow Perfection.** Excellent flavor. Oz. 15 cts.,  $\frac{1}{4}$ lb. 50 cts., lb. \$1.50.

## HERBS

**Anise.** Aromatic seeds, sometimes used as fishing-lures. Pkt. 10 cts., oz. 30 cts.

**Basil, Sweet.** Used for flavoring soups. Pkt. 10 cts., oz. 25 cts.

**Caraway.** Seeds used for cakes and liquors. Pkt. 10 cts., oz. 50 cts.

**Coriander.** Aromatic seeds. Pkt. 5 cts., oz. 10 cts.

**Dill, Mammoth.** Seeds used to flavor vinegar. Pkt. 10 cts., oz. 20 cts.

**Fennel, Florence.** Flavor resembles that of celery. Pkt. 10 cts., oz. 20 cts.

**Lavender.** Used in the preparation of lavender water. Pkt. 25 cts., oz. \$1.

**Marigold, Pot.** Has medicinal uses. Pkt. 10 cts., oz. 25 cts.

**Marjoram, Sweet.** Leaves are used for seasoning. Pkt. 25 cts., oz. \$1.

**Mint (Peppermint).** Pkt. 25 cts.

**Sage, Broad-leaved.** Leaves valuable for seasoning. Pkt. 25 cts., oz. \$1.

**Savory, Summer.** Invaluable for seasoning. Pkt. 10 cts., oz. 50 cts.

**Savory, Winter.** Used as above. Pkt. 10 cts., oz. 40 cts.

**Tarragon.** Does not produce seeds. Roots ready for sale in spring and fall. 35 cts. each, \$3 for 10.

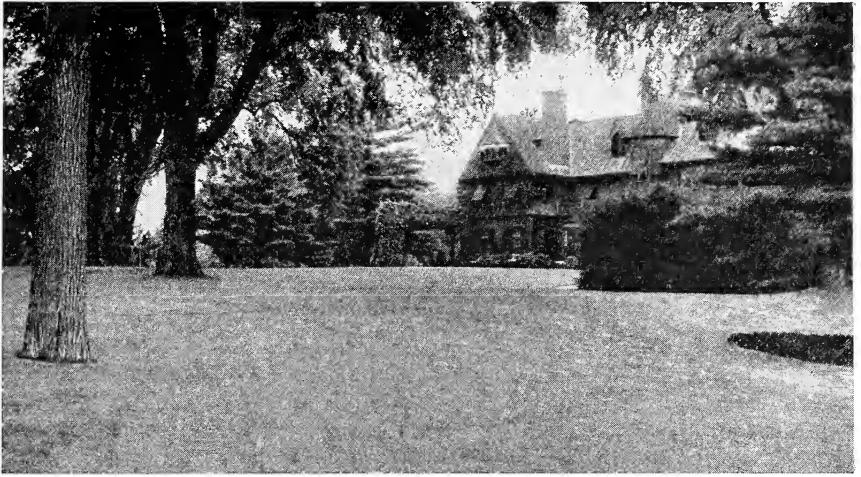
**Thyme, English.** Pkt. 25 cts., oz. \$2.

**Thyme, French.** Used for seasoning; attractive to bees. Pkt. 25 cts.



Dill

Thyme



## LAWN AND GRASS SEEDS

Since the lawn, with shrubs and trees, forms the setting of the house, every care should be taken to have a good turf. Do not attempt to make a lawn upon ground which lacks good drainage and do not enrich the soil too much; work it over until it is thoroughly pulverized. When it has been made fine and level, the seed can be sown. The ground should be rolled both ways to press the seed firmly into the soil. In this locality, perhaps the best time to make a lawn is the month of April, but in favorable seasons sowing may be done up to a month or two later. Unless the sowing is done when the ground is moist, watering will be necessary.

### Bassi's Lawn Seed Mixtures

These are our own exclusive mixtures, composed of grasses best calculated to make a fine, heavy turf, which will grow better as it becomes older. Sow 80 to 100 pounds to the acre; 1 pound should sow 400 to 500 square feet. We have three grades of seed: First Grade,  $\frac{1}{2}$  bus. (50 lbs.) \$4.75, bus. \$9; Second Grade,  $\frac{1}{2}$  bus. (45 lbs.) \$4, bus. \$8; Third Grade,  $\frac{1}{2}$  bus. (35 lbs.) \$3.75, bus. \$7.

### Bassi's Grass Mixture for Shady Locations

This mixture is best adapted to places which do not get the direct rays of the sun.  $\frac{1}{2}$  bus. (50 lbs.) \$5, bus. \$9.50.

### Bassi's Grass Seed for Golf-Links and Tennis-Courts

The seed in these mixtures has proven best for the purposes which we indicate in the headings. Each mixture is the result of long and careful experiments.  $\frac{1}{2}$  bus. (60 lbs.) \$5.50, bus. \$10.

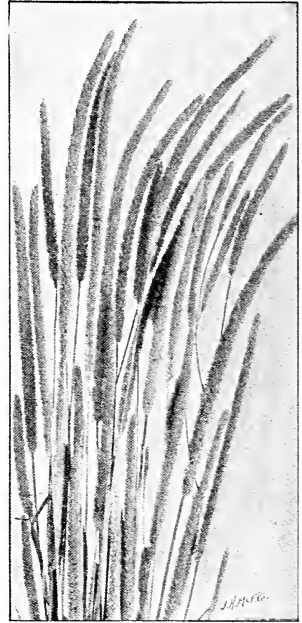
### Golf-Links

**Fair-Greens Mixture.** For general growth. 25 lbs. \$9, 100 lbs. \$35.

**Putting-Greens Mixture.** Specially selected to make a fine, firm, and lasting turf. 5 lbs. \$2.75, 10 lbs. \$5, 25 lbs. \$12, 100 lbs. \$45.



Red-Top Grass



Timothy

### MEADOW GRASS SEED

**Red-Top.** Although this grass is best adapted to moist land, it succeeds well even in a dry situation. Most mixtures intended for pastures contain a high percentage of this variety. Sow 60 pounds to the acre. Lb. 45 cts., 25 lbs. \$9.50, 100 lbs. \$37.50.

**Timothy.** Does better on moist or clayey soil than any other grass. It is a dandy sort to mix with Red-Top, and the nutritive quality of the mixture is far superior to either variety when used alone. If sown unmixed, at least 25 pounds should be used to the acre. Lb. 30 cts., 25 lbs. \$6.50, 100 lbs. \$23.50.

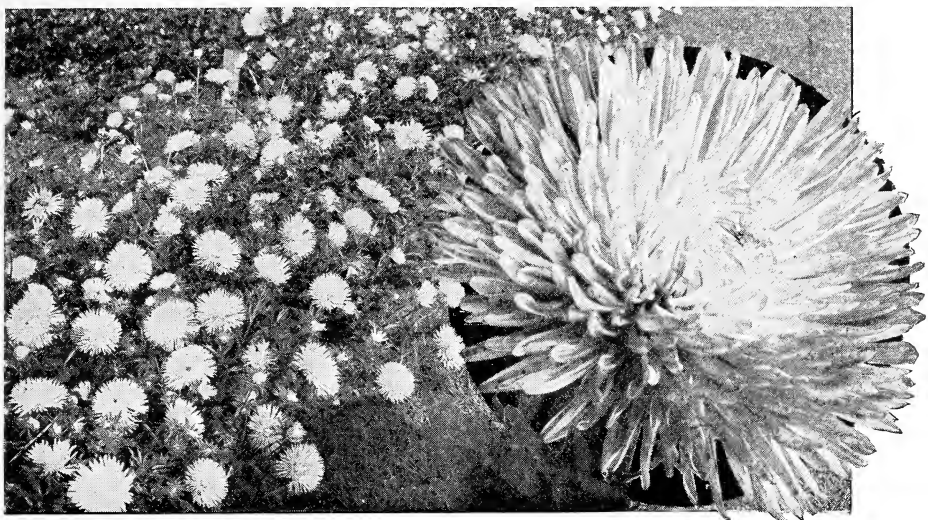
### CLOVERS

**Red Clover.** Should be sown in spring at the rate of 15 pounds to the acre. One of the best for pasture hay or green manure. Price on application.

**White Clover.** Very hardy; extremely valuable for permanent pastures. Sow 8 or 10 pounds to the acre. Just at present seed is scarce. Price on application.

## FARMOGERM

To keep your soil productive, you should use this inoculant upon every crop possible. Each sort is specially prepared for one sort of legume, so do not fail to state which variety you wish when you send your order. Acre size, \$2, 5-acre size, \$8, garden size, enough for 200 feet of row, 50 cts. State which of the following you desire to inoculate: White Clover, Red Clover, Crimson Clover, Alfalfa, Garden Beans, Cowpeas, Vetches, Canada Field Peas, Garden Peas, Sweet Peas, Soy Beans.



You need our choice seed to produce Asters of this quality

## HIGH-QUALITY FLOWER SEEDS

While there are large assortments of flower seeds in New York, we believe that no commonsense assortment is more complete than our own. Some seedsmen fill their catalogs with many varieties which are unknown, or even unpopular, just to make an impression. However, we have tried to catalog only the popular varieties, and we think you will find our assortment satisfactory in every particular. All flower seeds are delivered free on receipt of price.

### ASTERS

Seed may be sown in the open ground in May or in boxes in the house in March and April. Cover seed  $\frac{1}{2}$  inch deep and, when plants have three or four leaves, transplant 18 inches apart each way.

**Branching, Semple's.** Long-petaled flowers; exceedingly graceful and feathery in effect;  $2\frac{1}{2}$  feet high. Crimson, Lavender, Pink, Purple, Rose, White, each, pkt. 10 cts.

**Mixed Colors**, pkt. 10 cts.

**Crego, Giant.** Similar to the "Comet" Asters; large, fluffy flowers. Crimson, Dark Blue, Lavender, Rose, Shell-Pink, White, each, pkt. 15 cts.

**Mixed Colors**, pkt. 10 cts.

**King.** Distinct type; petals quilled; extra large. Crimson, Lavender, Pink, Rose, Violet, White, each, pkt. 15 cts.

**Mixed Colors**, pkt. 10 cts.,  $\frac{1}{4}$  oz. 75 cts., oz. \$2.50.

**Ostrich-Plume.** A splendid sort for cutting; large, handsome blooms. Crimson, Dark Blue, Rose, White, each, pkt. 15c.

**Mixed Colors**, pkt. 10 cts.

**Queen of the Market.** Probably the best early Aster. Spreading habit; long stems. Crimson, Purple, Lavender, Light Blue, Pink, Flesh, Scarlet, White, each, pkt. 15 cts.

**Mixed Colors**, pkt. 10 cts.,  $\frac{1}{4}$  oz. 60 cts.

**Truffaut's Peony Perfection.** Particularly noted for the brilliant colors of the flowers. Crimson, Light Blue, Rose, Scarlet, Snow White, each, pkt. 15 cts.

**Mixed Colors**, pkt. 10 cts.,  $\frac{1}{4}$  oz. 75 cts.

**Improved American Victoria.** Good blooms with incurling petals. We believe this type is best for bedding and borders, as it grows evenly and produces masses of beautiful flowers. Sometimes the sturdy plants carry more than fifty flowers each, all of them large and splendid. Azurea, Daybreak (shell-pink), Pale Lavender, Purity (Snow-white), Rose, Pink, each, pkt. 15 cts.

## SWEET PEAS

Of late years the Sweet Pea has been highly improved by specialists who have taken it in hand and produced large blooms on stronger, hardier plants which produce the beautiful flowers more freely. Rich soil should be used, with plenty of moisture; the same ground should not be used year after year.

### Large-Flowered (Grandiflora)

Light Blue and Lavender, Dark Blue and Purple, Claret and Maroon, Crimson and Scarlet, Pink (Light Shades), Pink (Deeper Shades), Pink and White (Bicolor), Striped and Mottled, Pure White, Yellow and Buff.

Separate packets of these colors, 5 cts. Mixed colors, pkt. 5 cts., oz. 10 cts.,  $\frac{1}{4}$ lb. 35 cts.

### Spencer Varieties

Flowers of these sorts are unusually large and the petals have a fluted and curved appearance which is not common to the other varieties. Sometimes called "Orchid-Flowering" Sweet Peas.

Pkt. 10 cts., unless otherwise noted

#### BLUE (Light and Dark Shades)

**Captain of the Blues.** A purple Spencer variety.

**Masterpiece.** Another variety of great merit.

#### CRIMSON AND MAROON

**Nubian.** Dark crimson-maroon.

**Othello.** Deep maroon, with great richness of coloring. Particularly desirable when planted with light shades.

#### PINK (Light Shades)

**Countess.** Soft rose-pink.

**Florence Morse.** Bluish pink, slightly deeper near the edge.

**Blanche Ferry.** Carmine-rose, with white wings.

**George Herbert.** Salmon-rose; delicate and beautiful.

#### SALMON AND ORANGE

**Barbara.** True salmon color. Pkt. 15 cts.

**Fiery Cross.** Brilliant orange-red-cerise.

**Mrs. Hardcastle Sykes.** Unusually large flowers; beautiful light salmon-pink.

#### SCARLET

**Queen Alexandra.** Rich scarlet; self-colored.

**Vermilion Brilliant.** An unusually good scarlet.

#### WHITE

**America.** White with light stripes of crimson.

**White.** Pure white, good-sized blooms, beautifully waved. Pkt. 15 cts., oz. 40c.

#### YELLOW

**Clara Curtis.** Creamy yellow; flowers large.

**Dobbie's Cream.** Good primrose type.

### Sweet Peas in Mixture

**Bassi's Special Mixture.** This is made up of the best, large-flowering varieties of the newest sorts. Pkt. 5 cts., oz. 10 cts.,  $\frac{1}{4}$ lb. 35 cts.

**Spencer Varieties.** Good assortment of different colors. Pkt. 10 cts., oz. 20 cts.,  $\frac{1}{4}$ lb. 75 cts.

**Eckford Mixture.** Eckford varieties only. Pkt. 5 cts., oz. 10 cts.,  $\frac{1}{4}$ lb. 35 cts.



One of the pretty Spencer types

## GENERAL LIST OF FLOWER SEEDS

**ACONITUM Napellus.** A perennial plant which is well adapted to shady places. Attractive panicles of helmet-shaped blue flowers. Pkt. 10 cts.

**ADLUMIA cirrhosa** (Mountain Fringe). A perennial climbing vine with beautiful dark rose flowers. Pkt. 10c.

**AGERATUM.** An annual that grows anywhere and blooms all summer producing an abundance of delicate blue flowers. Well adapted to borders.

**mexicanum.** Blue. Pkt. 5 cts.

**Blue Perfection.** Good dwarf variety; large flowers. Pkt. 10 cts.

**Imperial Dwarf Blue.** Good edging sort. Pkt. 10 cts.

**Little Blue Star.** Dwarf growth; bright flowers. Pkt. 25 cts.

**Fine Mixed Colors.** Pkt. 5 cts.

**AGROSTEMMA coronaria.** Easy to cultivate; blooms in summer and autumn. Good for naturalizing in dry situations. Pkt. 5 cts.

**ALYSSUM.** A popular annual that can be sown thickly in spring.

**maritimum.** Very fragrant white flowers all summer long. Pkt. 5 cts., oz. 50 cts.

**saxatile compacta.** Single plants in a year cover a square foot. Pkt. 5 cts.

**saxatile compacta, Little Gem.** Erect in growth. Pkt. 10 cts.,  $\frac{1}{4}$ oz. 20 cts.

**AMARANTHUS.** Strong-growing annual of great ornamental value. Quite easy to grow. Use rich soil.

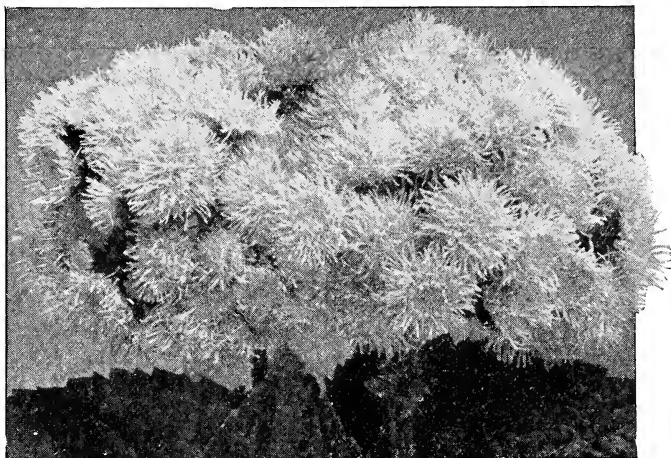
**bicolor ruber.** Brilliant red. Pkt. 5 cts.

**caudatus** (Love-Lies-Bleeding). Dark red. Pkt. 5 cts.

**salicifolius** (Fountain Plant). Purple. Pkt. 10 cts.

**tricolor.** Variegated foliage. Pkt. 5 cts., oz. 50 cts.

**Fine Mixed Varieties.** Pkt. 5 cts., oz. 30 cts.



Ageratum—a plant with fluffy blooms

**AQUILEGIA** (Columbine). Easy to grow and quite desirable. Sow seed early in spring; thin to a foot apart.

**californica hybrida.** Orange-red and yellow. 2 feet. Pkt. 5 cts.

**canadensis.** For shady locations; scarlet and yellow. Pkt. 10 cts.

**chrysantha.** Large golden yellow flowers. Pkt. 25 cts.

**cærulea.** Sometimes known as Rocky Mountain Columbine. Sepals blue; petals white. Pkt. 15 cts.

**BALLOON VINE.** Fast-growing climber; white blossoms. Pkt. 5 cts.

**BALSAM** (Lady's-Slipper). Easy to cultivate, but requires rich soil and plenty of water.

**Double Bright Scarlet.**

**Double Rose.**

**Double Yellow.**

**Double White.**

Separate pkts. 10 cts.

**Finest Double Varieties, Mixed.** Pkt. 10 cts., oz. 50 cts.

**CALENDULA.** The orange, red and yellow blooms are very popular. The growth is made on long stems which make fine specimens for cutting.

**officialis grandiflora fl.-pl.** Large-flowering; deep orange. Pkt. 5 cts.

**grandiflora sulphurea fl.-pl.** Bright yellow; good-sized flowers. Pkt. 5 cts.

**Meteor.** Orange with a creamy white center; good cutting sort. Pkt. 5 cts.

**Mixture of all Sorts.** Pkt. 5 cts.





Canterbury Bells

**CALLIOPSIS.** Sow in open ground in spring; give plenty of room.

**bicolor.** Yellow-brown. Pkt. 5 cts.

**Annual Sorts, Mixed.** Pkt. 5 cts., oz. 40 cts.

**grandiflora.** A perennial sort with rich yellow flowers. Pkt. 10 cts.

**CAMPANULA** (Canterbury Bells).

Planted in clumps of separate colors they are extremely effective in borders.

**Medium, Single** (Canterbury Bells).

Bloom first year if sown early. Blue. Pkt. 5 cts.

**Medium, Single, White.** Pkt. 5 cts.

**Medium, Single, Rose.** Pkt. 10 cts.

**Medium, Single, Mixed Colors.** Pkt. 5 cts.

**Medium, Double, Blue.** Rich, heavy flowers in summer and fall. Pkt. 10c.

**Calycanthemum** (Cup-and-Saucer). Occasionally a single plant will have 40 flowers open at once. Pkt. 10 cts.

**pyramidalis, Mixed.** Beautiful large blue flowers. Pkt. 10 cts.

**CANDYTUFT** (Iberis). Sow outdoors in April; transplant when an inch high.

**affinis.** Good for bedding. Pkt. 5 cts.

**coronaria.** Flowers in tall spikes. Pkt. 5 cts.

**Giant Hyacinth-flowered.** White; trusses large. Pkt. 5 cts.

**odorata.** Flowers small, white, fragrant. Pkt. 5 cts.

**umbellata Dunnettii.** Deep crimson. Pkt. 5 cts.

**umbellata, Dwarf Hybrids, Mixed Colors.** Pkt. 10 cts.

**CARNATION.** To get the largest flowers, seed should be sown in pots of good soil. Tall varieties should be staked and tied. Although young plants are hardy outdoors, they are injured by cold after two or three years, so sowings should be made annually.

**Marguerite, Double, Mixed**

**Colors.** Produce flowers in profusion five months from sowing. Pkt. 10 cts.

**CELOSIA cristata, Glasgow**

**Prize.** Blooms from midsummer until frost; dark leaves and crimson combs. Pkt. 10 cts.

**Dwarf Varieties, Mixed.** Pkt. 10 cts.

**plumosa.** Beautiful annual plants with showy crimson plumes. Pkt. 10 cts.

**Pride of Castle Gould.** Handsome feathery plumes; extra-fine mixture. Pkt. 25 cts.

**CENTAUREA.** Also known as Cornflower, Blue Bottle.

**montana, Blue** (Perennial Cornflower). Pkt. 10 cts.

**imperialis.** Splendid flowers for cutting; last well when placed in water. We have this in three colors, White, Purple and Rose; also mixed. Pkt. 10 cts.

**Cyanus.** The old-fashioned Cornflower. Pkt. 5 cts.

**Cyanus, Mixed.** Pkt. 5 cts.

**CHRYSANTHEMUM.** Sow seed where the plants are to flower. These annuals should not be confused with the winter-flowering sorts of the florists.

**coronarium sulphureum.** Double. Good pale yellow sorts. Pkt. 5 cts.

**tricolor Burridgeanum.** Crimson-maroon, with white edge. Pkt. 5 cts.

**Single Sorts, all Colors Mixed.** Pkt. 5 cts.

**Double Sorts, all Colors Mixed.** Pkt. 5 cts.

**CLARKIA elegans alba, Double Varieties Mixed.** Pkt. 5 cts.

**pulchella, Single Varieties Mixed.** Pkt. 5 cts.

**COBÆA scandens.** A half-hardy climber; rapid grower. Pkt. 10 cts.

**CONVOLVULUS major** (Tall Morning-Glory), **Mixed Varieties.** Pkt. 5 cts.

**COSMOS.** One of the best fall plants for early flowering.

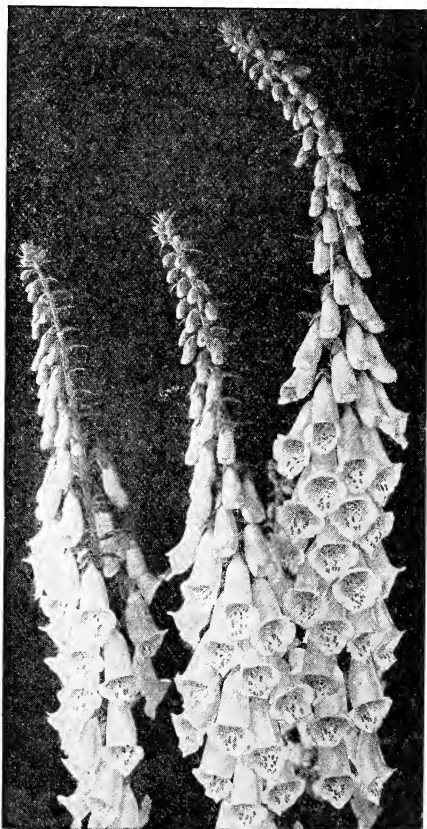
**Early-flowering.** Pink, White, and Mixed Colors. Pkt. 10 cts.

**Mammoth Perfection, Mixed Colors.** Long stemmed flowers. Pkt. 10 cts.

**CYPRESS VINE.** See *Ipomœa Quamoclit.*



- DAISY.** Sow in February or March, in shallow soil indoors; set in open ground when all danger of frost is over.
- Double Varieties, Mixed.** Pkt. 10 cts.  
**monstrosa alba, Double.** Pkt. 25 cts.
- DELPHINIUM** (Larkspur). Few flowers are more popular than these, because of their color and the possibilities of combination with other garden favorites.
- Emperor, Branching, Annual, Mixed Colors.** Pkt. 10 cts.
- Perennial Varieties.** Somewhat taller than the annual sorts and requiring a little more space.
- belladonna.** A unusual pale blue. Pkt. 15 cts.
- formosum.** Brilliant blue with a white center. Pkt. 25 cts.
- formosum caelestinum.** Handsome sort. Pkt. 25 cts.
- DIGITALIS** (Foxglove). Sow seed outdoors in spring and transplant seedlings into a warm place; it will bloom magnificently the following year. They require a deep soil with partial shade.
- gloxiniæflora, Mixed Colors.** Pkt. 10c.  
**monstrosa, Mixed Colors.** Pkt. 10 cts.
- ESCHSCHOLTZIA.** The state flower of California; usually known as the California Poppy. Plants average a foot high.
- californica.** Rich yellow. Pkt. 5 cts.  
**crocea.** Pure deep orange. Pkt. 5 cts.  
**crocea, Double Orange.** Pkt. 5 cts.  
**Mixed Colors.** Pkt. 5 cts., ¼oz. 20 cts.
- EUPATORIUM Fraseri.** Good late perennial. Pkt. 5 cts.
- FORGET-ME-NOT** (*Myosotis*). Requires a cool, moist location. Sow in spring. Varieties bloom freely the first season.
- alpestris.** Pretty trailer with blue flowers. Pkt. 10 cts.  
**alpestris alba.** Dainty white flowers. Pkt. 10 cts.  
**alpestris, Mixed Colors.** Pkt. 10 cts.  
**palustris.** The true Forget-me-not. Best known of all. Pkt. 15 cts.
- FOUR O'CLOCK** (*Mirabilis*). Called Four o'Clock because it opens at that hour in the afternoon.
- Hybrids, Mixed Colors.** Pkt. 5 cts.
- GAILLARDIA grandiflora maxima.** Free bloomer all summer long until frost. Extra-fine Mixed. Pkt. 10 cts.  
**picta, Mixed Colors.** Pkt. 5 cts.  
**picta Lorenziana.** Large double flowers. Mixed Colors. Pkt. 5 cts.
- CODETIA.** Splendid flowers for solid beds, border-lines, and potting.
- Tall Varieties, Mixed.** Pkt. 5 cts., ¼oz. 20 cts.  
**Dwarf Varieties, Mixed.** Pkt. 5 cts., ¼oz. 25 cts.
- GOURDS (Ornamental), Mock Orange.** Orange-shaped fruits. Pkt. 5 cts.  
**Mixed.** Many varieties. Pkt. 5 cts.
- GYPSOPHILA** (*Baby's Breath*). Delicate, graceful flowers.
- elegans grandiflora alba.** White flowers. Pkt. 10 cts.  
**paniculata.** White. Pkt. 10 cts.
- HELICHRYSUM.** Flowers are large and brightly colored.
- monstrosum, Tall, Double, Mixed Colors.** Pkt. 10 cts.  
**monstrosum, Dwarf, Double, Mixed Colors.** Pkt. 10 cts.
- HUMULUS japonicus** (*Japanese Hop*). Good annual climber; 15 to 20 feet. Pkt. 5 cts.



Digitalis is now strikingly "in style"

**HOLLYHOCKS** (*Althæa rosea*). Sow in April and May, not later than June, to flower the next year. Does best in deep, rich soil.

**Double Varieties, Mixed Colors.**  
Pkt. 10 cts.,  $\frac{1}{4}$ oz. 60 cts.

**Allegheny, Fringed, Mixed Colors.**  
Pkt. 15 cts.

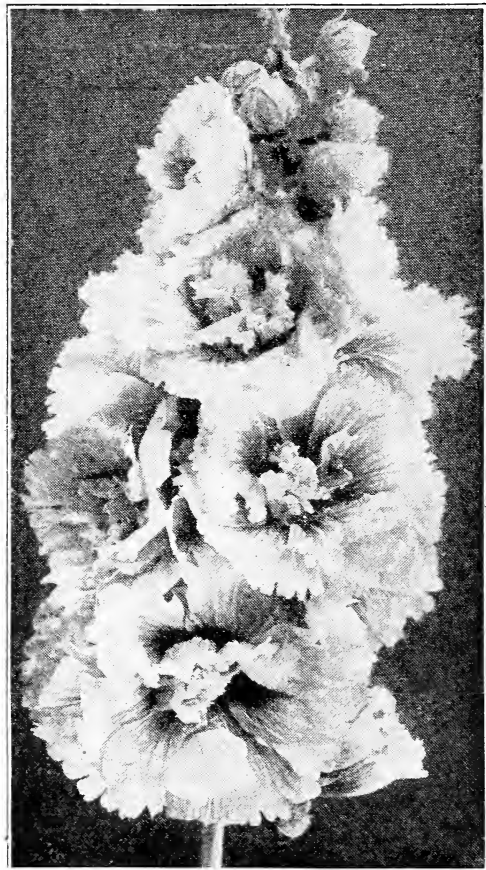
**Single Varieties, Mixed Colors.** Plants \$2.50 and \$3 per doz.

**ICE PLANT.** White flowers. Pkt. 5 cts.

**IMPATIENS** (Touch-me-not). The wax-like flowers are produced in profusion and almost continuously. Recognized favorites for greenhouses, they make splendid table flowers. The young plants should be handled with great care as they are remarkably brittle.

**sultani.** Rosy carmine. Pkt. 25 cts.

**sultani hybrida, Mixed Colors.** Splendid mixture. Pkt. 25 cts.



Hollyhocks are still favorites

**IPOMŒA** (Moonflower; Morning-Glory; Cypress Vine). Thorny seeds of some varieties should be soaked in hot water before sowing. Nothing finer for porches.

**Bona-nox.** Large blue flowers opening in the evening. Pkt. 5 cts.

**Imperial Japanese Morning-Glory, Mixed Colors.** Finest single varieties. Pkt. 5 cts.

**Giant Mikado.** Largest flowers of all. Pkt. 10 cts.

**mexicana grandiflora alba.** White flowers. Pkt. 10 cts.

**mexicana grandiflora hybrida alba.** Numerous large flowers. Pkt. 10 cts.

**KOCHIA tricophylla.** A hardy annual of rapid growth. Foliage green in summer, red in autumn. Pkt. 5 cts.,  $\frac{1}{2}$ oz. 25 cts., oz. 40 cts.

**KUDZU VINE.** One of the fastest growers among the really desirable vines. Fragrant flowers of purplish violet. Excellent for screening porches, covering fences, etc. Pkt. 10 cts.

**LANTANA.** Tender perennial; fine for bedding and pot-culture. Pkt. 5 cts.

**LATHYRUS latifolius** (Perennial Pea). Like sweet peas, but without fragrance. Hardy, and live for years. Pkt. 10 cts.

**Mixed Colors.** Pkt. 10c., oz. 60c.

**LOBELIA.** Suitable for hedgings, baskets, and pots. Sow in early spring and thin a little. Transplant several inches apart.

**Annual Varieties.** Bloom quickly from seeds. Pkt. 10 cts.

**Erinus gracilis.** Trailing; blue. Pkt. 5 cts.

**Mixed Varieties.** Pkt. 10 cts.  
**erecta, Crystal Palace compacta.** Dark blue. Pkt. 20 cts.

**LOVE-IN-A-MIST.** Pretty hardy annuals with curious flowers.

**Mixed Varieties.** Pkt. 5 cts., oz. 30 cts.

**MARIGOLD.** The splendid yellow color of the flowers makes a brilliant display in the garden, which lasts far into the autumn.

#### African Varieties

**Eldorado.** Large, double flowers. Pkt. 5 cts.

**Orange.** Rich; deeper in color than the preceding. Pkt. 5 cts.

**Pride of the Garden.** Dwarf; double; very rich yellow. Pkt. 10 cts.

**Double Varieties, Mixed.** Pkt. 5 cts.,  $\frac{1}{4}$ oz. 25 cts., oz. 75 cts.

**French Marigolds**

**Dwarf Striped.** Flowers peculiarly marked. Pkt. 10c.  
**Tall Varieties, Double, Mixed Colors.** Pkt. 5 cts.,  
 ¼oz. 25 cts., oz. 75 cts.

**Dwarf Varieties, Double, Mixed Colors.** Pkt. 5 cts.,  
 ¼oz. 25 cts., oz. 75 cts.

**MIGNONETTE.** Successive sowings should be made if continuous blooms are desired. Can be started in February or March under glass; sow outdoors about April 1.

**Reseda odorata grandiflora** (Sweet Mignonette). Red, with a very sweet scent. Pkt. 5 cts., oz. 25 cts.

**Machet, Dwarf.** Deep red. Pkt. 10 cts.

**MIMOSA pudica** (Sensitive Plant). The leaves close when touched. Flowers pink. Pkt. 10 cts.

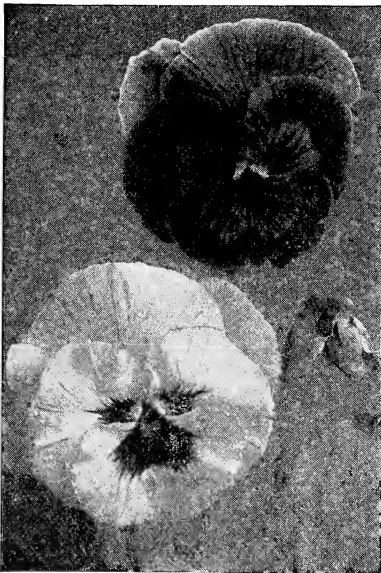
**MIMULUS** (Monkey Flower). Showy plant; best in moist ground. Pkt. 10 cts.

**moschatus** (Musk Plant). Fragrant foliage; yellow. Pkt. 10 cts.

**tigrinus.** Tigered and spotted varieties. Pkt. 10 cts.



Marigolds are marvels of elegance



Choice seeds guarantee choice Pansies

**NASTURTIUM.** These easily head the list of the best flowers for the amateur's garden. They will produce remarkable blooms on ground which is too poor to grow anything else with success. The color range is very great. They should be picked daily to insure continuity of bloom.

**Dwarf or Tom Thumb, Mixed Varieties.** Pkt. 10 cts., oz. 20 cts., ¼lb. 60 cts., ½lb. \$1.10, lb. \$2.

**Mixture of Tall Sorts.** Pkt. 10c., oz. 20c., ¼lb. 60c., ½lb. \$1.10, lb. \$2.

**Finest Mixture.** These are noted for their brilliancy of bloom. Pkt. 5 cts., oz. 10c., ¼lb. 35c., ½lb. 65c., lb. \$1.25.

**PANSY.** Sow the seeds in spring when the soil is warm, if possible, in a cool place where they may be protected from the hot rays of the noon sun. For early spring flowering, sow seeds in autumn and protect during the winter. Pansies succeed best in fresh soil enriched thoroughly with decomposed manure.

**Trimardeau Giant, Mixed Varieties and Colors.** A strain with remarkably large flowers marked with blotches; extra-vigorous plants. Pkt. 25 cts., ¼oz. \$1.25, oz. \$4.

*No garden is complete without a Pansy-bed*

**PASSIFLORA cærulea** (Passion Flower).  
Blue. Pkt. 10 cts.

**PENTSTEMON, Mixture of Large-flowered Varieties.** Hardy free-flowering perennials. Excellent for rock-gardens and borders. Pkt. 25 cts.

**PETUNIA HYBRIDA.** After they have got a good start, Petunias may be grown almost as easily as common weeds and they will bloom from early spring until fall. They should be started in boxes in fine soil in sunny windows of rooms, and in April or May transplant a foot apart in garden-beds. They succeed in almost any soil.  
**superbissima, Mixed Colors.** Yellow-throated varieties which attain great size. Pkt. 50 cts.

**Perfection Mixture.** Unusual fringed sorts. Pkt. 25 cts.

**Large-flowering Double Varieties, Mixed.** Remember that only a small portion of the double strain bears double flowers. Pkt. 50 cts.

**Rosy Morn.** Rosy pink with white throat. Pkt. 15 cts.

**Single Varieties, Mixed.** Splendid assortment of colors. Pkt. 10 cts., ¼oz. 50 cts., oz. \$1.50.

**PHLOX DRUMMONDII.** Sow as soon as the frost is out of the ground in spring, or they may be started in seed-beds and transplanted. Do not plant too thickly; they may suffer from mildew.

**Drummondii, continued**  
**grandiflora alba.** Pure white flowers. Pkt. 10 cts.

**Chamois-Rose.** Delicate shade. Pkt. 10 cts.

**coccinea.** Brilliant scarlet; free-flowering. Pkt. 10 cts.

**Crimson.** Extremely brilliant. Pkt. 10c.

**rosea.** Lighter than above. Pkt. 10 cts.

**stellata splendens.** Crimson. Pkt. 10c.

**Mixture of the Large-flowering Sorts.** Pkt. 10 cts., ¼oz. 60 cts., oz. \$2.

**grandiflora nana compacta, Mixture of Dwarf Sorts.** Pkt. 10c., ¼oz. \$1.

**PERENNIAL PHLOX, Large-flowering Hybrids, Mixed Varieties.** The flowers are unusual in combinations of colors and size. Pkt. 15 cts.

**PHYSOSTEGIA virginiana grandiflora** (Obedient Plant). Good cutting plant, bearing flowers on long stems. Pkt. 25 cts.

**PINKS (Dianthus).** Sowings should be made every year, as the young plants give the largest flowers. Sow under glass or in an open, sheltered bed. Rich ground should be used if especially large flowers are desired.

**chinensis.** Showy, double flowers. Pkt. 5 cts.

**Heddewigii, Mixed Colors.** Large, double flowers. Pkt. 10c., ¼oz. 40 cts.

**Royal Pink, Single, Mixed Colors.** An abundant, continuous bloomer; good for cutting. Pkt. 15 cts.

**Double, Mixed Colors.** An unusually good mixture of the best double varieties. Pkt. 10 cts., ¼oz. 40 cts., oz. \$1.25.

**imperialis fl.-pl.** This mixture contains the best varieties of the Double Imperial Pink. Pkt. 10 cts.

**plumarius** (Sweet May Pinks). These are usually the favorites of the old-fashioned garden. They are still held high in the esteem of many people. We have them in an excellent mixture of single varieties. Pkt. 10 cts., ¼oz. 25 cts.

**PRIMROSE, Evening.** Opens in the evening and lasts till late in the morning.

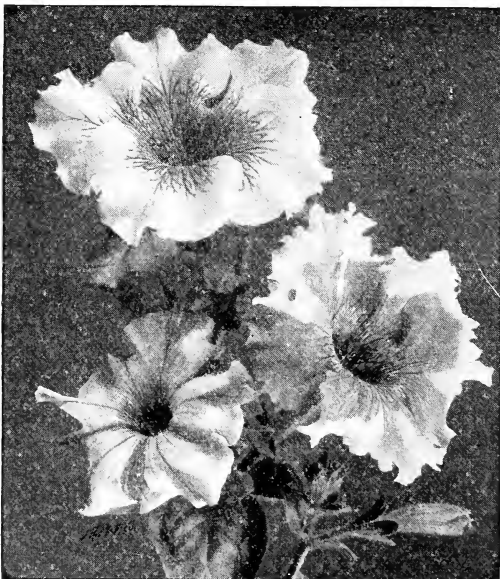
**Mixture of the Best Annual Varieties.** Pkt. 5 cts.

**PYRETHRUM.** A hardy perennial for edgings and borders.

**atrosanguineum.** Dark red shades. Pkt. 10 cts.

**roseum hybridum, Single, Mixed Colors.** Pkt. 10 cts.

**roseum hybridum, Double, Mixed Colors.** Pkt. 25 cts.



Aren't Petunias pretty? You can grow them

**RICINUS** (Castor-Oil Plant). Half-hardy annual. If planted thickly, it soon makes a handsome hedge. Tall varieties grow from 8 to 10 feet high. Grown as a specimen, it makes a magnificent display.

**bourboniensis arboreus.** Green foliage. Pkt. 5 cts.

**zanzibariensis, Finest Mixture.** Pkt. 5 cts., oz. 35 cts.

**Mixture of All the Best Sorts,** including varieties not given above. Pkt. 5 cts., oz. 30 cts.

**ROCKET, Sweet.** Hardy herbaceous perennials. Fragrant. Mixed Colors. Pkt. 5 cts.

**RUDBECKIA Newmannii** (Cone-flower). Large yellow flowers with dark central cones; quite easy to grow. Pkt. 10 cts.

**SALPIGLOSSIS grandiflora** (Painted Tongue). Funnel-shaped flowers, with dark veins and white ground; easily grown. Extra-choice. Mixed Colors, pkt. 15 cts.

**SALVIA splendens** (Scarlet Sage). Known everywhere and by everyone. Brilliant scarlet blooms all summer. Pkt. 10 cts.

**Ball of Fire.** Dwarf, compact variety, suited to pot-culture. Color dull red. Pkt. 25 cts.

**Bonfire.** Free-blooming, compact variety. Pkt. 10 cts.,  $\frac{1}{4}$ oz. \$1.50, oz. \$5.

**Early Dwarf Zurich.** Quite dwarf, grows only a foot high. Pkt. 25 cts.

**SCABIOSA caucasica.** Hardy perennial. The pale lavender flowers are borne on long stems and last well after cutting. Pkt. 10 cts.

**candidissima fl.-pl.** (Snowball). Perennial; pure white. Pkt. 10 cts.

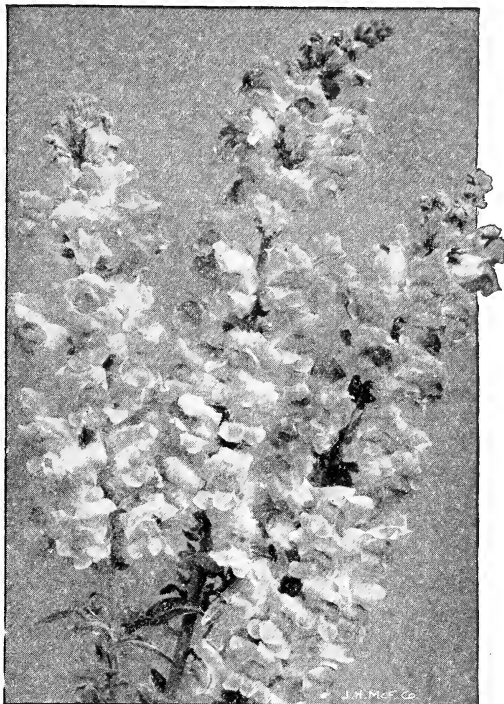
**Mixture of Tall Annual Varieties.** Large flowers; brilliant colors. Pkt. 5 cts.,  $\frac{1}{4}$ oz. 30 cts.

**Mixture of Dwarf Annual Varieties.** Pkt. 5 cts.

**SCHIZANTHUS.** Large masses of flowers. Fine for pots for summer gardens. A splendid mixture of the best varieties. Pkt. 5 cts.

**SILENE pendula.** Good for rockwork or borders. Our mixture contains the best varieties in all colors. Pkt. 5 cts.

**SNAPDRAGON.** Flowers first year from seed. The spikes are fine for cutting and the bloom is profuse. Sow seed every year.



Snapdragon

#### Tall Snapdragons

**Cottage Maid.** Pink with white throat. Pkt. 10 cts.

**Delicate Rose.** One of the most popular varieties. Pkt. 10 cts.

**Mixed Varieties.** Pkt. 5 cts.,  $\frac{1}{4}$ oz. 25 cts., oz. 75 cts.

#### Tall, Large-flowering Varieties

**Orange Beauty.** Orange-scarlet, with golden tip. Pkt. 25 cts.

**Queen Victoria.** Pure white. Pkt. 10c.

**Venus.** Tinted pink, with white throat. Pkt. 15 cts.

**Yellow.** Pure color. Pkt. 10 cts.

**Mixed Varieties.** Pkt. 10 cts.,  $\frac{1}{4}$ oz. 30 cts., oz. \$1.

#### Semi-dwarf Varieties

**Crimson King.** Deeper than Scarlet King. Pkt. 15 cts.

**Scarlet King.** Tall spikes of brilliant scarlet. Pkt. 15 cts.

**Fine Mixture of Semi-dwarf Varieties.** Pkt. 10 cts.

**STATICE sinuata candidissima** (Sea Lavender). Useful, when dried, as Everlastings for winter bouquets. Pkt. 5 cts.



Zinnias are  
marvels of  
precision

**STOCKS.** Sow under glass in March and April; transplant to garden in April or May, in rich soil. If large plants are potted in fall, they will flower all winter.

**Large-flowering Dwarf Pyramidal. Mixed Colors.** Pkt. 25 cts.

**Large-flowering Dwarf, Mixed Colors.** Pkt. 10 cts.

**Dresden Perpetual, Mixed Colors.** Pkt. 25 cts.

**SUNFLOWER (Helianthus).** Plant seed in open garden and thin the plants to stand from 2 to 4 feet apart.

**Double California.** Yellow variety. Pkt. 5 cts.

**Double Globe-flowered.** Blooms late; ball-shaped. Pkt. 5 cts.

**macrophyllus giganteus.** Leaves yellow; huge, yellow flowers. Pkt. 5 cts.

**SWEET WILLIAM.** Old-fashioned standby for the flower-garden; produces abundant blooms. Flowers second year from seed.

**Mixture of Giant Double and Single Varieties.** Pkt. 10c., ¼oz. 20c., oz. 50c.

**TRITOMA uvariagrandiflora** (Red-Hot-Poker Plant). Fiery orange; gorgeous spikes of bloom. Pkt. 10 cts.

**TROLLIUS, Mixed Hybrids** (Globe Flower). Hardy perennials with buttercup-like blossoms. Flowers vary from yellow to gold. Pkt. 10 cts.

**TROPÆOLUM.** See *Nasturtium*.

**VERBENA.** Frequently used as undergrowth for taller plants. For early spring blooming sow in glass in February. Soak the seed in warm water before sowing. Use rich soil.

**hybrida cœrulea.** Shades of bright blue. Pkt. 10 cts.

**hybrida italica striata.** Striped variety. Pkt. 10 cts.

**hybrida, Scarlet.** In different shades. Pkt. 10 cts.

**hybrida, Mixed.** Pkt. 10c., ¼oz. 35c.

**citriodora.** Good greenhouse shrubs; has a citron scent. Pkt. 10 cts.

**VERONICA** (Speedwell), Perennial Varieties Mixed. Pkt. 10 cts.

**WALLFLOWER.** Half-hardy perennials with delicate fragrance, bearing light flowers in spring and early summer. Good for planting in greenhouses.

**Golden King.** Large, single, golden yellow flowers. Pkt. 10 cts.

**Rose Queen.** Lovely terra-cotta-pink. Pkt. 10 cts.

**Mixture of Single-flowering Dwarf Sorts.** Pkt. 10 cts.

**Mixture of Annual Varieties.** Extra-flowering strain; many colors. Pkt. 15c.

**Mixture of Double, Tall-branching Varieties.** Pkt. 25 cts.

**Mixture of Double, Dwarf-branching Varieties.** Pkt. 25 cts.

**ZINNIA** (Youth and Old Age). Zinnias bloom from July till the first hard frost. Both double and single blooms are found, but our assortment includes only the double varieties. From our sales, we have found that most people care little or nothing for the single while the symmetrical double varieties are popular everywhere.

**Tall Mammoth-flowering Double.** We can furnish seed of this variety in White, Violet, Sulphur-Yellow, Scarlet, Orange, Flesh-color, Crimson, or Bronze. Separate pkts., 15 cts. each.

**Tall Mammoth-flowering Double Varieties,** a mixture of all colors. Pkt. 15 cts.

**Tall Double Varieties** (2 ft. high), Mixed Colors. Pkt. 10 cts.

**Dwarf Double Varieties** (15 in. high), Mixed Colors. Pkt. 10 cts.

## DAHLIAS

All of the varieties offered below have strong roots; they should produce excellent blooms the first year.

### Cactus Dahlias

<b>Bianca.</b> Hybrid Cactus. Delicate lavender.....	Each \$0 75
<b>Cockatoo.</b> Lemon-yellow and amber.....	35
<b>Countess of Lonsdale.</b> Deep salmon-red. Earliest cut-flower variety.....	20
<b>Crystal.</b> White center, graduating to pink edges.....	50
<b>Ecstasy.</b> Mauve-pink, white tips.....	50
<b>Etandard de Lyon.</b> Carmine-rose; large.....	75
<b>Frances White.</b> Fine petals; pure white.....	50
<b>F. W. Fellows.</b> Large; bright orange-scarlet. Extra good sort....	75
<b>Golden Gate.</b> Golden yellow; extra large.....	35
<b>J. H. Jackson.</b> Large; crimson-mauve.....	30
<b>Kalif.</b> Hybrid Cactus. Gigantic; glowing scarlet. One of the best in this class.....	50
<b>Marguerite Bouchon.</b> Brilliant rose-pink, white center. A beautiful flower.....	75
<b>Nibelungenhort.</b> Old-rose; large.....	75
<b>Pierrot.</b> Amber, white t'p. Fine fancy Cactus.....	75
<b>Rene Cayeaux.</b> Geranium - red. Good cut-flower variety.....	25
<b>Ruth Forbes.</b> Clear mauve-pink.....	35
<b>Magpie.</b> A striking fancy Cactus; pink, white, and maroon.....	35
<b>Mauve Queen.</b> Beautiful shade of mauve; pointed petals.....	35
<b>Mrs. C. H. Breck.</b> White in center, shading to pale straw, rose-pink at the tips.....	75
<b>Sequoia.</b> Saffron-yellow and red; an unusually good sort.....	30
<b>Sherlock.</b> Orange-scarlet; large plumes.....	35
<b>Walkure.</b> Golden yellow; large....	35
<b>Wodan.</b> Salmon-rose; quite large..	35

### Decorative Dahlias

<b>Delice.</b> Bright pink.....	30
<b>D. M. Moore.</b> Large; rich velvety maroon.....	35
<b>Grand Duke Alexis.</b> Large; white, edged with pink.....	25
<b>Hortulanus Fiet.</b> Salmon, blending to yellow at center; very large....	75
<b>Jack Rose.</b> Rich red; good sort....	20
<b>John Wanamaker.</b> Rose blooms of exquisite beauty.....	35
<b>King Albert.</b> A dark violet flower of great merit.....	I 00



Cactus Dahlia

<b>King of Autumn.</b> Buff-yellow, suffused with terra-cotta; long stems. One of the best of recent introductions.....	Each \$1 00
<b>Le Grand Manitou.</b> White, striped and splashed with reddish violet. One of the largest of this class....	35
<b>Manitou.</b> Amber-bronze; immense flowers.....	50
<b>Minna Burgle.</b> Beautiful, deep glowing crimson; large, extra free-flowering. Good for cut-flowers...	35
<b>Mrs. Roosevelt.</b> Delicate pink;...	30
<b>Oregon Beauty.</b> Bright red; large.	50
<b>Perle du Parc de la Teted'Or.</b> Fine white, overlaid lavender.....	20
<b>Rose Gem.</b> A very attractive delicate pink; free-flowering; large flowers on long stems.....	I 00
<b>Souv. de Gustav Doazon.</b> Flowers measure 9 inches and over in diameter; color orange-red.....	25
<b>Terra-Cotta.</b> Large flowers of terra-cotta color; really beautiful.....	I 00
<b>W. W. Rawson.</b> Pure white, overlaid with amethyst-blue.....	35

### Peony-flowered Dahlias

<b>Andrew Carnegie.</b> Flesh and amber. A favorite variety.....	35
<b>Cecelia.</b> Large; creamy white or pale lemon-yellow.....	50
<b>Chatenay.</b> Shaded salmon.....	40
<b>California.</b> Large; clear yellow....	35
<b>Cardinal.</b> Maroon-purple; extra-large. One of the best for cutting..	I 00



PEONY-FLOWERED DAHLIAS, continued	
	Each
<b>Dr. Peary.</b> Maroon; large flowers...So	35
<b>Geisha.</b> Scarlet and gold.....	50
<b>Hampton Conot.</b> Deep pink.....	40
<b>Latona.</b> Buff-yellow; beautiful, flowers, desirable for cutting.....	1 00
<b>Mme. Coissard.</b> Carmine-crimson, suffused with white.....	75
<b>Salvatore.</b> Dark rose-pink.....	1 00
<b>Vater Rhein.</b> Primrose-yellow, suf- fused with salmon. A large sort...	50
<b>Zepelin.</b> Delicate lilac flowers....	35

### Show Dahlias

<b>A. D. Livoni.</b> Delicate pink.....	15
<b>Dreer's White.</b> Fine, large, white Dahlia; quilled.....	25
<b>Dreer's Yellow.</b> Deep yellow; nicely quilled.....	50
<b>Cuban Giant.</b> Crimson purple....	25
<b>Elsie Burgess.</b> White, suffused with lavender. Good cut-flower.....	35
<b>Grande Duchesse Marie.</b> Large; color fine bronze. Good for cutting.	35

### Special Offers in Dahlias.

Fine assortments of Dahlias, my own selection of the best sorts. These assortments will give good variations of color and type. Each variety is correctly labeled.

6 DIFFERENT VARIETIES, \$1.50. 12 DIFFERENT VARIETIES, \$2.50  
25 DIFFERENT VARIETIES, \$5

NOTE. In addition to the Dahlias listed we carry a large number of other varieties. Send in your list of what you want, and we will be pleased to quote prices.

### SHOW DAHLIAS, continued

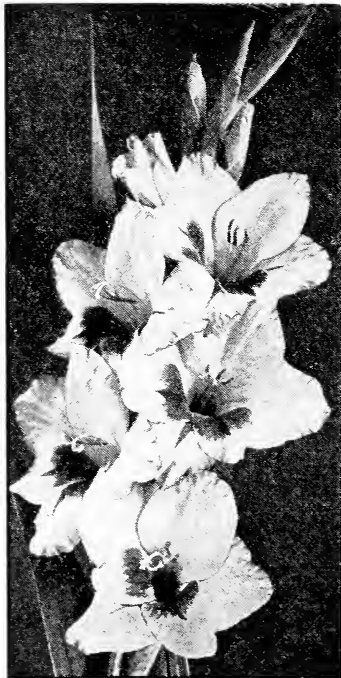
	Each
<b>Mary D. Hallock.</b> Yellow quilled Dahlia; medium size.....	\$0 15
<b>Mrs. Saunders.</b> Yellow, white tips.	20
<b>Vivian.</b> White, edged with rose-pink.	35

### Pompon Dahlias

<b>Catherine.</b> Yellow.....	15
<b>Darkest of All.</b> Nearly black....	15
<b>Elfin.</b> Beautiful, primrose-yellow..	15
<b>Klein Domitea.</b> Orange-buff.....	15
<b>Snowclad.</b> White; small.....	15
<b>Sunshine.</b> Crimson-scarlet.....	15

### Single Dahlias

<b>Eckford Century.</b> Pure white, spotted and penciled crimson....	20
<b>Gaillardia.</b> Yellow and red.....	15
<b>Miss Emma.</b> Rich red and golden yellow; large, fine flowers.....	25
<b>Rose-Pink Century.</b> Large flowers, rose-pink in color.....	20
<b>Tango Century.</b> Bronze. Large..	50
<b>White Century.</b> Pure white. Large.	20



America produces beautiful blooms of good size

## GLADIOLI

Plant the bulbs as soon as danger of frost is past, 3 inches deep and 8 inches apart. Take up the bulbs at the end of October, dry in the open air, and store in a cool, dry place, free from frost.

**America.** Flesh-pink, tinged with lavender; large, spreading blossoms. 50 cts. for 10, \$1.50 per 100.

**Baron Hulot.** (Lemoine.) Deep indigo-blue; the best blue Gladiolus. 75 cts. for 10 bulbs, \$7 per 100.

**Glory of Holland.** White, tinted with rose. 80 cts. for 10 bulbs, \$7.50 per 100.

**Halley.** Salmon-pink, lower segments blotched yellow. 50 cts. for 10 bulbs, \$1.50 per 100.

**Lily Lehman.** White, with frilled edge tinted with rose. \$1 for 10 bulbs, \$9 per 100.

**Mrs. Frank Pendleton.** Bright pink, with carmine blotches on lower petals. 90 cts. for 10 bulbs, \$8.50 per 100.

**Niagara.** Primrose-yellow, tinged with pink in throat. 90 cts. for 10 bulbs, \$8.50 per 100.

**Panama.** Deep rose flowers; large. 90 cts. for 10 bulbs, \$8.50 per 100.

**Peace.** Large, white flowers, with lilac blotch on lower petals. 75 cts. for 10 bulbs, \$8 per 100.

**Pink Beauty.** Carmine-rose with blotch of red on lower petals. \$1 for 10 bulbs, \$9 per 100.

**Pink Perfection.** Rose, with white stripe in the center of every petal. \$1 for 10 bulbs, \$9 per 100.

**Schwaben.** Light yellow, deep red blotch. \$1 for 10 bulbs, \$9 per 100.

**Taconic.** Bright pink, flecked with shades of the same color. 75 cts. for 10 bulbs, \$7 per 100.



## MISCELLANEOUS BULBS

### AMARYLLIS

Plant as soon as received, in seed-pots an inch larger than the diameter of the bulb. Use good loam, with one-fourth of leaf-mold or pulverized manure, and some sand. Good drainage is very important.

**Formosissima.** Dark crimson blooms; very effective. 25 cts. each, \$2 for 10.  
**Reginæ.** Light scarlet; white center on throat. 45 cts. each, \$4 for 10.

### CRINUM

Should be grown in large tubs with three-fourths of the bulb out of the soil. Remove to a coolhouse in fall; the new leaves will appear in February. Placed outside when warm weather begins they will flower through the summer.

**Powelli.** Long stems with large, bell-shaped flowers borne at the top. 25c. ea.

### LILIES

Plant in a light, well-drained soil; leaf-mold will be productive of good results. Tall sorts should be screened from high winds.

**Bolanderi.** Deep crimson flowers, dotted with purple. 60 cts. each, \$5 for 10.

**Canadense.** Drooping yellow flowers, dotted with red. 15 cts. each, \$1.25 for 10.

**Columbianum.** Orange flowers, dotted with maroon. These possess quite a fragrance. 60 cts. each, \$5 for 10.

**Elegans incomparable.** Deep red, with black blotches. 25 cts. each, \$2 for 10.

### LILY-OF-THE-VALLEY

Fine, large clumps, with many flowering tips. These will show to great advantage if planted in shaded positions or when naturalized by the sides of paths. 40c. ea.

### MONTBRETIAS

Culture for these desirable flowers is exactly the same as that recommended for Gladioli. Plant grows in sunny situation. \$1.50 each.

### PEONIES

Peonies have been greatly improved the last five or six years, and the brilliant display they make in the garden is most remarkable. The new forms are really wonderful in size and color. Our varieties are all double in form, with huge blooms. They may be had in White, Crimson, Rose, Carmine, and Pink. 45 cts. each, \$4 for 10.

### HARDY PHLOX

These do well in almost any kind of soil and under all climatic conditions. Plant in spring or fall. The plants start growing quite early in the spring and for that reason they should be planted as soon as the ground can be worked. Fall planting is good, as it permits the roots to become established before cold weather checks the growth.

**Miss Lingard.** 25 cts. each, \$2 for 10.

**Mrs. Jenkins.** 25 cts. each, \$2 for 10.

**Rheinlander.** 35 cts. each, \$3 for 10.

**R. P. Struthers.** 35 cts. each, \$3 for 10.

**Rijnstrom.** 35 cts. each, \$3 for 10.

## FERTILIZERS

The figures to the right of each fertilizer give the percentage of ammonia, phosphoric acid, and potash contained in each. Prolific and Elk are for garden use; Meadow Queen and Ground Bone for the lawn. In addition to these we will be glad to give prices on Tankage, Dried Blood, Thompson's and Clay's Fertilizers on request. Prices on fertilizers are f. o. b. New Rochelle, N. Y.

Am.	Ph.A.	Pot.		100 lbs.	¼ton	½ton	Ton
1	7	1	<b>Prolific Fertilizer</b> (garden).....	\$3 25	\$14 00	\$27 50	\$58 00
1	8	4	<b>Elk Brand</b> (garden).....	3 25	14 75	28 50	56 00
3	9	2	<b>Meadow Green Fertilizer</b> (lawn)....	4 25	20 00	39 50	78 00
1	9	3	<b>A.A.C. Pathfinder Fertilizer</b> (1920)..	4 25	20 00	39 00	68 50
4	8	4	<b>Monarch Potato Manure</b> .....	5 00	25 00	50 00	100 00
	14		<b>American Agricultural Chemical</b> ... 2	50	12 00	21 00	40 00
3%	50%		<b>B.P.L. Ground Bone</b> .....	4 50	20 00	38 00	75 00
			<b>Pulverized Sheep Manure</b> .....	4 00	18 00	35 00	65 00
			<b>Nitrate of Soda</b> .....	6 00			

Fertilizer prices are subject to change without notice

Don't think of sending in your order until you have included the following varieties:

**Bountiful Beans** (see page 1).

**Golden Bantam Corn** (see page 6).

**Davis Perfect Cucumber** (see page 7).

**Grand Rapids Lettuce** (see page 9).

**Long Icicle Radish** (see page 15).

**New Zealand Spinach** (see page 16).

# INSECTICIDES AND FUNGICIDES

Transportation charges to be paid by purchaser

- Aphine.** Unexcelled for the destruction of green, black, or white fly, thrips, red spider, mealy bug, etc. Does not injure the plants. Dilute 1 part to 40 parts water.  $\frac{1}{4}$  pt. 25 cts.,  $\frac{1}{2}$  pt. 40 cts., pt. 65 cts., qt. \$1, gal. \$3.
- Aphis Punk.** Nicotine-saturated paper for fumigating. Box of 12 sheets 75 cts., 12 boxes \$8.50.
- Arsenate of Lead.** Remains well suspended in solution. Lb. 35 cts., 5 lbs. \$1.50, 10 lbs. \$2.75, 25 lbs. \$6.50, 50 lbs. \$12.50, 100 lbs. \$24.
- Bordeaux Mixture.** For all diseases of fungous nature.
- Dry.** Lb. 50 cts., 5 lbs. \$2, 50 lbs. \$15.
- Liquid.** Qt. 50c., gal. \$1.50, 5 gals. \$4.50.
- Bordeaux Arsenate Lead, Paste.** Lb. 35 cts., 5 lbs. \$1.50, 10 lbs. \$2.50, 25 lbs. \$6, 50 lbs. \$10.50.
- Bug Death.** This is a fungicide, insecticide, and plant-food. Lb. 20 cts., 3 lbs. 50 cts., 5 lbs. 75 cts., 12 $\frac{1}{2}$  lbs. \$1.50.
- Black-Leaf 40.** Good for killing flower- and plant-lice. 1-oz. bottle 40 cts.,  $\frac{1}{2}$  lb. \$1, 2 lbs. \$3.25, 10 lbs. \$13.75.
- Cattle Comfort.** To be applied as a protection against flies. Gal. \$1.75, 5 gals. \$8.
- Copper Solution, Ammoniated.** Prevents pear and apple scab, black and brown rot, mildew, leaf-mold, etc. Dilute 1 part to 100 parts water. Spray lightly. Qt. \$1.25, gal. \$3.25.
- Cutworm Killer.** Cutworms will not injure plants when the soil is mixed with this preparation. Lb. 35 cts., 5 lbs. \$1.25.
- Fir-Tree Oil.** Mixed in proportion of 1 pint to 20 gallons of water. Apply with syringe.  $\frac{1}{2}$  pt. 75 cts., pt. \$1.25, qt. \$2.25,  $\frac{1}{2}$  gal. \$4, gal. \$7.
- Fish-Oil Soap.** For destroying insects on the bark of trees. Lb. 25 cts., 5 lbs. \$1.20, 10 lbs. \$2.20, 100 lbs. \$20.
- Fungine.** For mildew, rust, and other blights. Pt. 65 cts., qt. \$1, gal. \$3.50.
- Grape Dust, Hammond's.** For the prevention of mildew on roses, grape-vines, gooseberries, etc. 5 lbs. 90 cts., 10 lbs. \$1.40, 100 lbs. \$12.50.
- Hellebore.** Use dry or, mixed with water. 1 ounce to 3 gallons water. Lb. 60 cts., 2 lbs. \$1.10.
- Imp Soap Spray.** Contains no poisons. Pt. 50 cts., qt. 75 cts., gal. \$2.25, 5 gals. \$10.
- Kerosene Emulsion.** For cabbage worms, tree scale, rose bugs, etc. Qt. 55 cts.,  $\frac{1}{2}$  gal. \$1, gal. \$1.50, 5 gals. \$6.50.
- Kilm Weed Eradicator.** Will exterminate dandelion. Easy to use. 50 cts. each; extra tubes of powder, 25 cts. each.
- Lawn Compound, Sterlingworth.** Non-poisonous powder to destroy plantain, dandelion, and chickweed. Will not injure the grass. 5 lbs. 75 cts., 10 lbs. \$1.25, 50 lbs. \$5, 100 lbs. \$9.
- Lemon Oil.** For destroying scale, mildew, bugs, etc.  $\frac{1}{2}$  pt. 30 cts., pt. 50 cts., qt. 90 cts.,  $\frac{1}{2}$  gal. \$1.50, gal. \$2.50.
- Lime-Sulphur Solution.** For San José scale. Dilute 1 part to 15 parts water. Qt. 50 cts., gal. 75 cts., 5 gals. \$3.50, 25 gals. \$9.50, bbl. \$17.50.
- Lime-Sulphur, Dry.** One pound makes 2 gallons of solution. Lb. 35 cts., 5 lbs. \$1.25, 100 lbs. \$15.
- Nico-Fume Liquid.** For spraying use one to two teaspoonfuls to a gallon of water. For green fly, mealy bug, etc.  $\frac{1}{4}$  lb. 65 cts., lb. \$2, 4 lbs. \$7.50, 8 lbs. \$14.50. Fumigators, 50 cts.
- Nico-Fume Tobacco Paper.** For fumigating. 2 doz. sheets \$1.25, gross \$5, 2 gross \$9.50.
- Paris Green.** Effective for use against all chewing insects, potato bugs, etc.  $\frac{1}{4}$  lb. 25 cts.,  $\frac{1}{2}$  lb. 40 cts., lb. 75 cts.
- Pyrox.** Kills all insects and fungous diseases. Lb. 40 cts., 5 lbs. \$1.75, 10 lbs. \$3, 25 lbs. \$6.25, 50 lbs. \$11, 100 lbs. \$20.
- Readeana.** Rose-bug exterminator in liquid form. 8 ozs. 50c., qt. \$1.35, gal. \$4.
- Scalecide.** For San José scale. Qt. 70 cts., gal. \$1.60, 5 gals. \$6.80, 10 gals. \$11.70.
- Slug-Shot, Hammond's.** Good for destroying cutworms, potato bugs, cabbage, turnip and beet flies. Lb. 20 cts., 5 lbs. 65 cts., 10 lbs. \$1.25, 100 lbs. \$11.
- Sulpho-Tobacco Soap.** Two ounces to a gallon of water for rose slugs, aphides, etc. 3 ozs. 10 cts., 8 ozs. 20 cts.
- Sulphur, Powdered.** For mildew on grapes, roses, etc. Lb. 15 cts., 10 lbs. \$1, 100 lbs. \$8.
- Tobacco Dust.** Regular kind. Lb. 10 cts., 5 lbs. 35 cts., 10 lbs. 60 cts., 100 lbs. \$3.50.
- Stoothoof's "Black Stuff."** 25 lbs. \$1.75, 50 lbs. \$3, 100 lbs. \$5.50.
- Stoothoof's "Fumigating Kind."** For burning. 25 lbs. \$1.75, 50 lbs. \$4, 100 lbs. \$5.50.
- Tobacco Stems.** For fumigating. In bales of 150 pounds, at \$2.75 per 100 lbs.
- Tree Tanglefoot.** Apply directly to the bark. Lb. 50 cts., 3 lbs. \$1.45, 10 lbs. \$4.50, 20 lbs. \$8.75.
- Weed-Killer, Pino-Lytol.** Destroys all weeds and other growth. Gal. 75 cts., 5 gals. \$8.50, 10 gals. \$17.
- X-L-All Liquid Insecticide.** Purely nicotine; kills all insect pests. Pt. 25 cts., qt. \$2,  $\frac{1}{2}$  gal. \$3.50, gal. \$6.

The above prices are subject to change without notice

# Horticultural Implements and Garden Necessities

Transportation charges to be paid by purchaser

- ATOMIZER, Large.** \$3.50.  
Small. \$3.
- JUMBO POWDER GUN.** Holds 2 ounces of powder. 40 cts.
- DIBBLES, All Iron.** 80 cts.  
Wood Handle. Brass point. \$1.
- DANDELION PULLER, Hall's.** 50 cts.
- EDGING KNIVES.** Socket handle; made of the very best steel. 8-inch, \$3; 9-inch, \$3.25.

## Flower-Pots

Full inside measurement. No charge for packing. Six at dozen rates; 50 at 100 rates; 500 at 1000 rates.

Diam.	Doz.	100	1,000
2-in.	\$0 35	\$1 50	\$12 00
2½-in.	40	2 10	16 50
3-in.	50	2 70	21 60
3¾-in.	75	3 90	31 00
4-in.	80	4 20	33 60
5-in.	I 50	7 50	60 00
6-in.	2 00	11 25	90 00
7-in.	3 10	18 60	148 80
8-in.	5 25	28 00	224 00
9-in.	7 50	39 00	312 00
10-in.	11 00	58 00	464 00
12-in.	21 00	113 00	910 00

## Flower-Pot Saucers

Diam.	Doz.	100
4-in.	\$0 45	\$2 50
5-in.	55	3 15
6-in.	85	4 90
7-in.	I 20	6 50
8-in.	I 60	9 50
9-in.	2 25	13 00
10-in.	2 75	15 00
11-in.	3 00	18 50
12-in.	3 40	22 50
14-in.	4 00	25 00

## Saucers, Indurated Wood-Fiber

Light and durable, not porous; will protect tables on which plants stand.

Sizes	Each	Doz.
5-in.	\$0 35	\$3 85
6-in.	37	4 07
7-in.	42	4 62
8-in.	45	4 95
9-in.	50	5 50
10-in.	53	5 83
12-in.	63	6 93
14-in.	80	8 80
16-in.	I 40	15 40
18-in.	I 75	19 25

**GRAFTING WAX.** Best grade. ¼lb. pkg. 20 cts., ½lb. pkg. 25 cts., lb. pkg. 40 cts.

**HOES, Garden, Draw, or Corn.** 5-in. 90 cts., 6-in. \$1.10, 7-in. \$1.15.

**English Scuffle.** 5-in. \$1.15, 6-in. \$1.30, 7-in. \$1.40, 8-in. \$1.50, 9-in. \$1.65. 6-ft. handles 60 cts. each, extra.

**Crescent Shape Scuffle Hoes.** Handled. 65 cts. each.

**HOSE, Rubber.** ¾-in. First class throughout, coupled at both ends.

**Electric.** 25- and 50-ft. lengths, 26 cts. per foot.

**Bulldog.** X, 6-ply, 20 cts. per ft., 7-ply, 22 cts. per foot.

**HOSE END, No. 1.** For connecting hose with faucet. 60 cts. each.

**HOSE COUPLINGS.** ½-in. 35 cts., ¾-in. 40 cts., 1-in. 45 cts.

**HOSE-NOZZLES, Graduating Lawn.** Will throw coarse or fine spray or solid stream. ¾-in. 85 cts. each.

**HOTBED SASH.** Best quality. Packing at cost.

**Unglazed.** 3 x 6 ft., 10 x 12 in. glass.

**Glazed and Painted.**

**Glazed and Painted.** Extra-heavy glass.

Prices on the above on application.

## LABELS, Wooden, Pot and Garden—

Sizes	PLAIN		PAINTED	
	100	1,000	100	1,000
4-in.	\$0 25	\$1 25	\$0 35	\$1 85
4½-in.	30	1 35	40	2 10
5-in.	35	1 85	45	2 50
6-in.	45	2 50	60	3 10
8-in.	I 35	7 50	I 50	9 50
10-in.	I 50	10 00	I 75	12 00
12-in.	I 75	12 00	2 00	15 00
24-in.	3 50			

## Wooden, Notched Tree—

3½-in. cop-	PLAIN		PAINTED	
	100	1,000	100	1,000
per wire.	\$0 35	\$2 25	\$0 40	\$3 00
6-in., no wire	35	3 00	45	3 30

**RAFFIA.** For tying. Lb. 50 cts., 5 lbs. \$2.25, 10 lbs. \$4.

**SHEARS, Wiss Solid Steel Pruning.** 9-in. \$4, 10-in. \$4.50.

**Ladies' Nickel-plated.** \$1.75.

**English Hedge.** 8-in., plain, \$3, notched, \$3.50; 9-in., plain, \$3.50, notched, \$4; 10-in., plain, \$4, notched, \$4.75.

**Grass, "Trowel-Shank."** \$1 each.

**Grass, English Border.** For trimming grass and path edges. Handles 3 feet long. 8-in. \$4.75, 9-in. \$5.50, 10-in. \$6.25.

The above prices are subject to change without notice

## HORTICULTURAL IMPLEMENTS AND GARDEN NECESSITIES, continued

**SPADES, Square Point No. 2.** Regulation long or D-handle. \$1.75.

**Ames No. 2.** Long or D-handle. \$2.25.

**Boy's Spade.** D-handle. \$1.75.

**SPRINKLERS, Rubber Plant.** Large opening in neck; fills quickly.

**Straightneck.** 6-oz. 80 cts., 10-oz. \$1.10.

**Angleneck.** 6-oz. 90 cts., 10-oz. \$1.25.

**Peck's Improved Lawn Sprinkler.**

May be attached to hose and placed anywhere on the lawn. Waters 60 to 100 feet. 4-arm, \$5; 8-arm, \$6.

**Water Witch No. 3.** Scatters water in fine drops over a circular area of from 25 to 40 feet. 65 cts. each.

**Water Witch No. 4.** Similar to No. 3, but having a stand instead of spike for holding it upright. \$1.40.

**Ring Sprinkler.** Made of good quality brass. \$1 each.

**SPRAY PUMP, Bucket.** Brass; throws solid stream 50 feet; provided with combination nozzle and sprinkler for flowers. Good for washing windows. \$5.75. 8-ft. pipe extension, 75 cts. extra.

**Robertson Compressed-Air Sprayers.** Galvanized Tank, \$1.40. Brass Tank, \$2.25.

**Auto Sprayer.** Operates continuously on both the up and down stroke. 1-qt. tin \$1.15, 1-qt. tin pump, brass tank \$1.55.

**"Auto-Spray" Spray Pump.** With brass tank Auto-Pop nozzle, hose, and fittings. \$12.

Galvanized iron tank fittings \$8.

2 ft. brass extension pipe, 70 cts.

Auto-Pop nozzle, if sold alone, \$2.

**TROWELS, Solid Steel.** Handle cannot come off. 5-in. blade 70 cts., 6-in. blade 75 cts., 7-in. blade 80 cts.

**TREE-TUBS, New York Style.** Cedar timber, painted green—

No.	Diam. in.	Height in.	Each
1	12	10 $\frac{5}{8}$	\$3 00
2	13	12 $\frac{3}{4}$	4 00
3	14 $\frac{1}{2}$	14 $\frac{3}{4}$	5 00
3 $\frac{1}{2}$	16 $\frac{1}{2}$	15 $\frac{3}{4}$	6 00
4	19 $\frac{1}{2}$	16 $\frac{3}{8}$	7 50
5	22 $\frac{1}{2}$	18 $\frac{1}{2}$	9 50

**VASES, Flower.** Wood fiber for cut-flowers—

No.	Diam. in.	Depth in.	Each	Doz.
3	4	6	\$1 25	\$13 25
2	4 $\frac{1}{2}$	9	1 60	17 50
1	5 $\frac{1}{2}$	10	1 85	20 00
0	8	13	2 30	25 00

**WATERING-POT, French Model.** Long spout, brass joints, and fitted nozzles. 6-qt. \$4.50, 8-qt. \$5, 10-qt. \$5.50, 12-qt. \$6.

**Philadelphia.** Brass joints, two copper-faced roses. 6-qt. \$4, 8-qt. \$4.50, 10-qt. \$5, 12-qt. \$5.50.

**WEEDERS, Cleveland Lawn.** Trigger holds weeds so they can be pulled out. \$1.10 each.

**Lang's Hand.** Strap over finger keeps tool in the hand while operator's fingers are left free. 25 cts. each, \$2.75 per doz.

## Lawn-Mowers

Because of the limitations of storage space, we are unable to keep lawn-mowers in stock, but we can supply practically all makes upon order. We should be glad to have you consult us if you need a machine; we can probably help you in your decision. We can supply not only hand-mowers, but horse and gasoline machines as well.

## Planet Jr. Farm and Garden Implements

**No. 3. Hill Dropping and Drill Seeder** only. Capacity 3 quarts.

**No. 4. Combined Hill and Drill Seeder and Single Wheel Hoe.**

**No. 4D. Hill and Drill Seeder.**

**No. 5. Hill and Drill Seeder.** Capacity 5 quarts. 16 $\frac{1}{2}$ -in. drive-wheel.

**No. 25. Combined Hill and Drill Seeder and Double Wheel Hoe** complete.

**No. 31. Combined Drill Seeder and Single Wheel Hoe.**

**No. 31D. Drill Seeder** only.

**No. 16. Single Wheel Hoe,** has 1 Plow, 2 Hoes, 3 Cultivator Teeth, 2 Rakes, and Leaf-Lifter.

**No. 17. Single Wheel Hoe,** has 1 Plow, 2 Hoes and 3 Cultivator Teeth.

**No. 17 $\frac{1}{2}$ . Single Wheel Hoe,** has 2 Hoes and 3 Cultivator Teeth, 2 Leaf-Lifters and 4 Rakes.

**No. 19. Single Wheel Hoe.**

**No. 11. Double Wheel Hoe,** has 2 Plows, 4 Hoes, 4 Cultivator Teeth, 2 Leaf-Lifters and 4 Rakes.

**No. 12. Double Wheel Hoe,** has 2 Plows, 2 Hoes, 4 Cultivator Teeth, and Leaf-Lifters.

**No. 13. Double Wheel Hoe,** has two 6-inch Hoes.

We shall be glad to send a catalogue fully describing Planet Jr. Tools upon receipt of your application. Prices quoted are net, f. o. b. New Rochelle.

The above prices are subject to change without notice





# Prices for Grass Seed and Fertilizers

All prices for Grass Seed on pages 19 and 20 are cancelled and only those upon this page should be used when ordering. The varieties of grasses are the same we carried last year. It has been necessary to revise some of the prices, as we now rate all varieties by weight instead of measure. Complete descriptions will be found on pages 19 and 20.

## GRASS SEED

	Lb.	2 lbs.	5 lbs.	10 lbs.	25 lbs.	50 lbs.	100 lbs.
Central Park, Extra Choice . . . . .	\$0 50	\$0 95	\$2 30	\$4 25	\$10 00	\$18 50	\$35 00
Central Park, Choice . . . . .	45	85	2 00	3 50	8 00	15 50	30 00
Central Park, Prime . . . . .	35	65	1 50	2 75	6 75	13 00	25 00
Shady Spot . . . . .	75	1 35	3 00	5 50	12 50	23 50	45 00
Golf-Course Putting-Green . . . . .	60		2 75		13 00		50 00
Fair Green Mixture . . . . .	45		2 25		9 75		37 50
White Clover . . . . .	90			8 50			80 00
Red Clover . . . . .	50			4 50			40 00

## Our New Fertilizer List

Only the rates quoted here should be consulted when ordering; those upon page 33 are cancelled.

In our list of Fertilizers you will find some varieties which have been compounded for a particular crop, and others which are suitable for everything in the ordinary garden. More information about them will be found on page 33.

We are local agents for the American Agricultural Chemical Company, and we will be glad to quote prices upon any fertilizer they manufacture.

## FERTILIZERS

	Am.	Ph.A.	Pot.	100 lbs.	200 lbs.	¼ ton	½ ton	Ton
Prolific . . . . .	1	7	1 . .	\$3 25	\$6 25	\$15 00	\$29 00	\$57 50
Sterling Mixture . . . . .	2	10	0 . .	3 50	6 75	15 00	29 50	58 00
Elk Brand . . . . .	1	8	4 . .	3 50	6 75	15 00	29 50	58 00
Matchless . . . . .	2	8	2 . .	3 50	6 50	15 00	29 00	57 50
Meadow Queen . . . . .	3	9	2 . .	4 25	8 00	19 00	37 50	74 50
Ammoniated "A" . . . . .	1	10	0 . .	3 25	6 25	15 00	29 00	57 50
The Pathfinder 1920 . . . . .	1	9	3 . .	3 50	6 50	15 00	29 00	57 50
Dissolved Phosphate and Potash . . . . .		10	2 . .	3 25	6 25	15 00	29 00	57 50
Monarch Potato Manure . . . . .	4	8	4 . .	5 00	10 00	25 00	50 00	100 00
Acid Phosphate . . . . .		14		2 50	4 75	12 00	21 00	40 00
Nitrate of Soda (Nit., 15 per cent; Am., 18.23 per cent) . . . . .								7 00
Fine Ground Bone (Am., 3 per cent; B. P. L., 50 per cent) . . . . .				5 00	9 50	23 00	45 00	85 00
Sheep Manure (Am., 2 per cent; T.P.A., 1 per cent; K <sub>2</sub> O, 1 per cent) . . . . .				4 50		20 00	38 00	70 00

# BASSI FRERES, Inc.

de PARIS

NEW ROCHELLE

NEW YORK

*Bassi Frères* <sup>Inc</sup>  
*de Paris*

NEW ROCHELLE, NEW YORK